

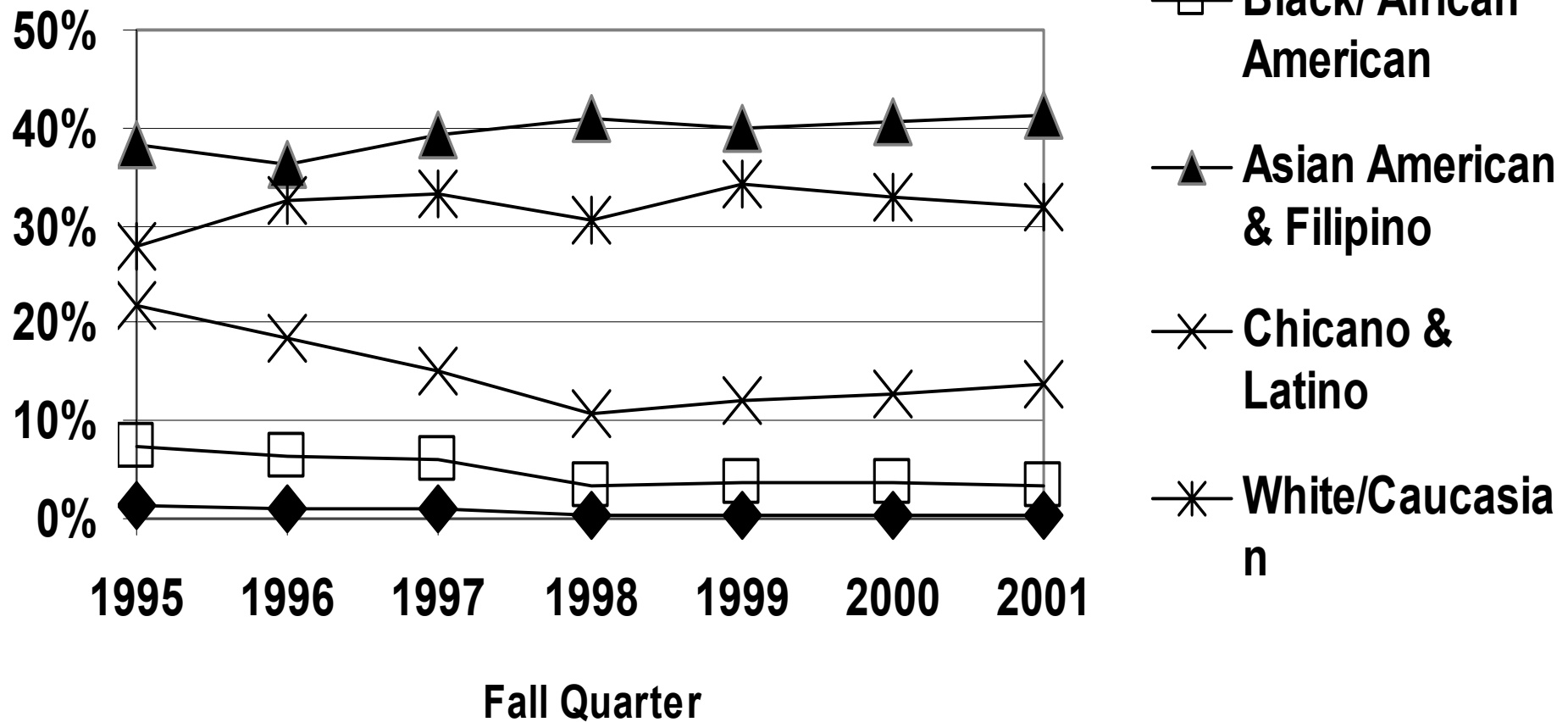
I. Sources of Information About UCLA Students

<http://www.sairo.ucla.edu>

II. Overview: What Our Students Look Like

Ethnic Enrollment of First-Time, First Year Students*

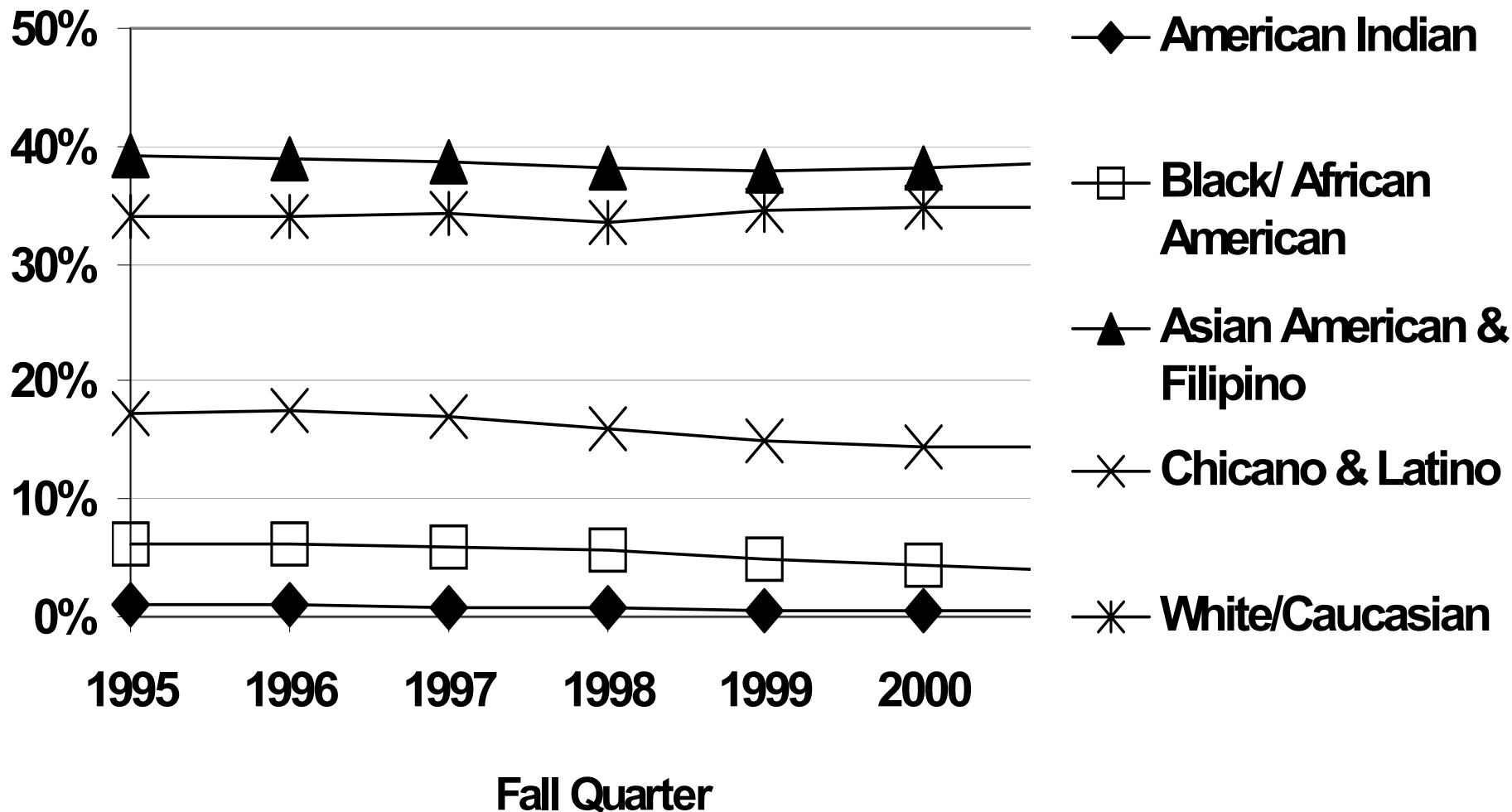
Fall 1995 - Fall 2001



Sources: APB, CIRP Trends Data,
YFCY 2002

All Undergraduate Enrollment by Race/Ethnicity*

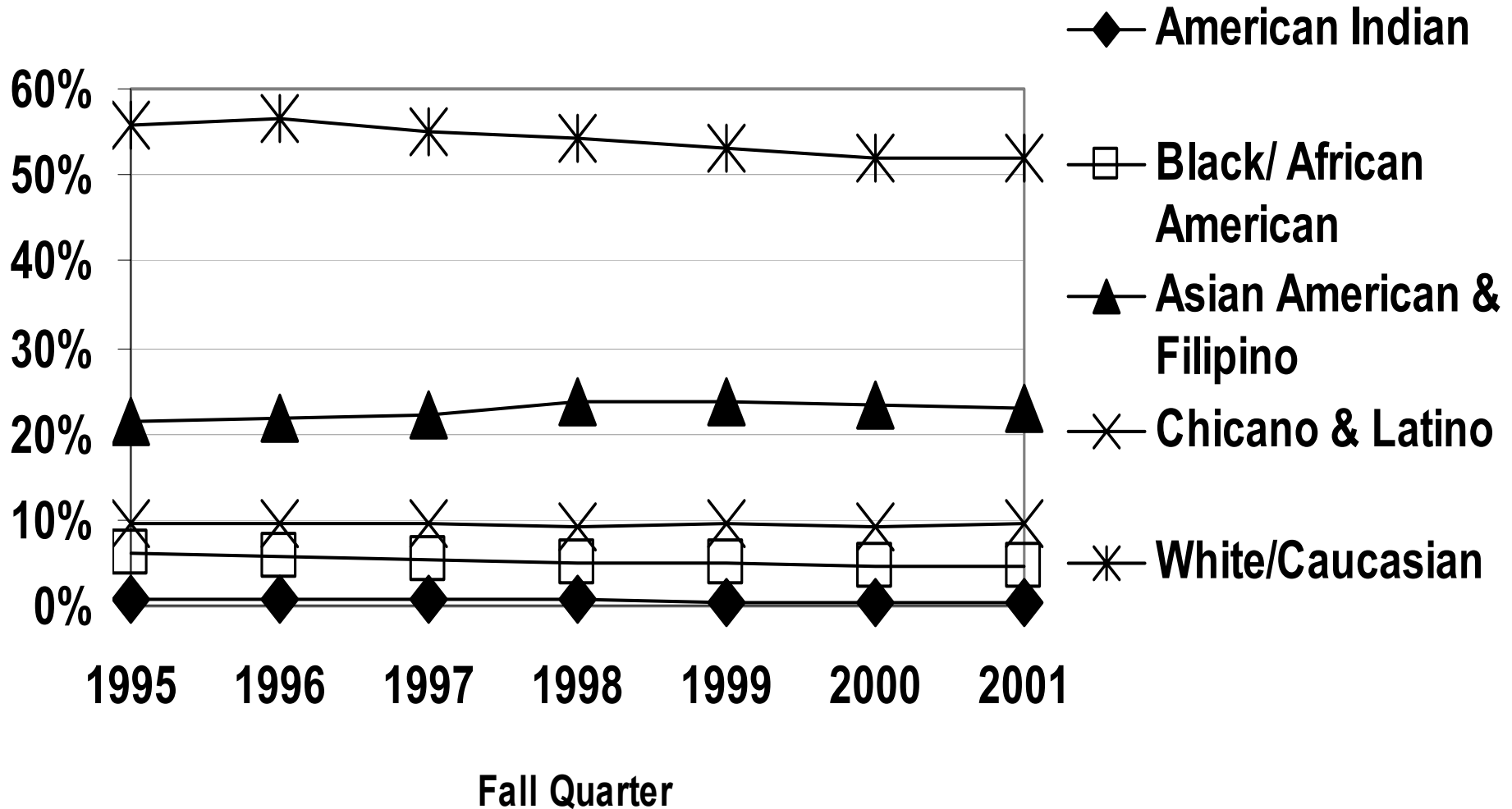
Fall 1995 - Fall 2001



Sources: APB, CIRP Trends Data,
YFCY 2002

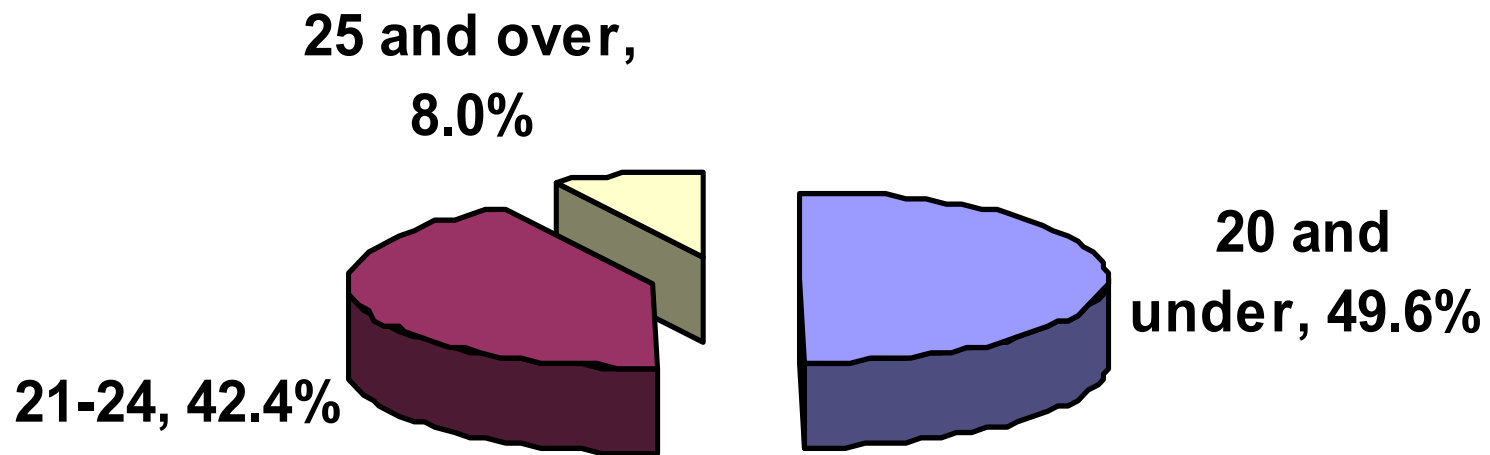
Graduate Enrollment by Race/Ethnicity*

Fall 1995 - Fall 2001



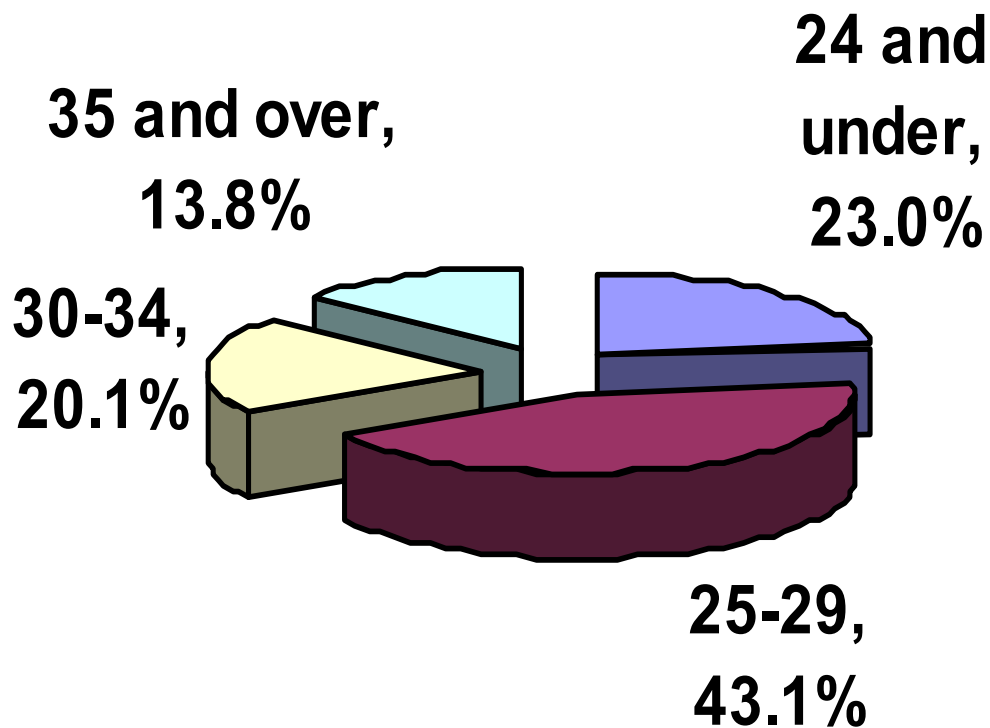
Sources: APB, CIRP Trends Data,
YFCY 2002

Age Distribution of Undergraduates Fall 2001



Sources: APB, CIRP Trends Data,
YFCY 2002

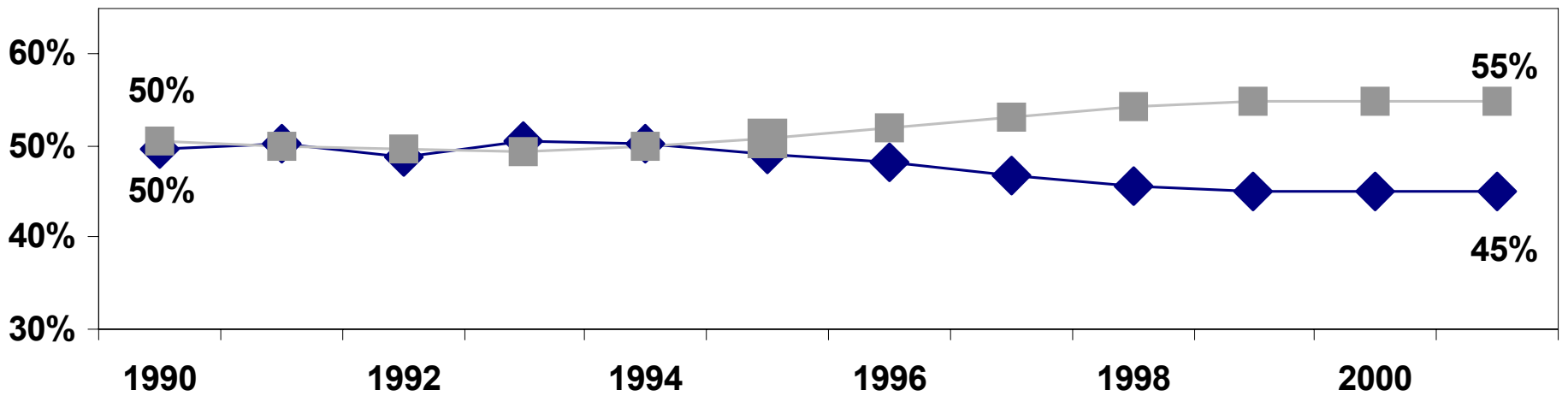
Age Distribution of Graduate Students Fall 2001



Sources: APB, CIRP Trends Data,
YFCY 2002

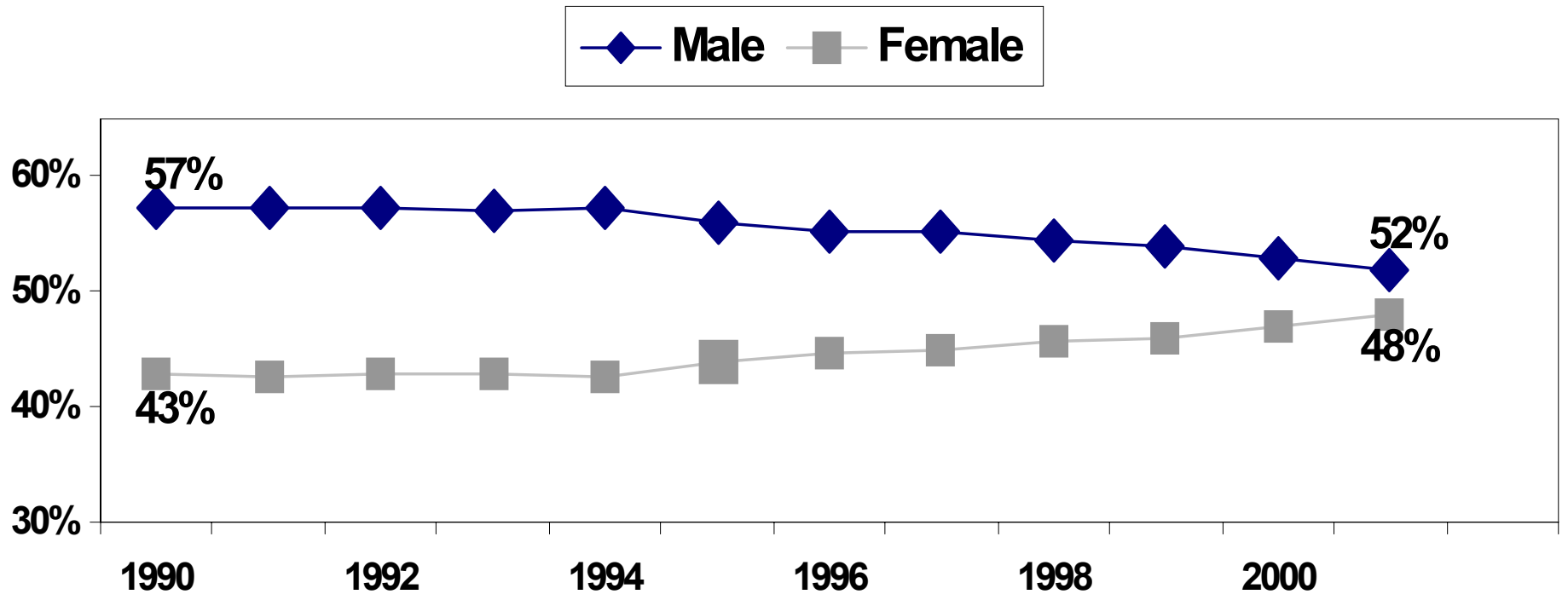
Gender Distribution of Undergraduates

◆ Male ■ Female



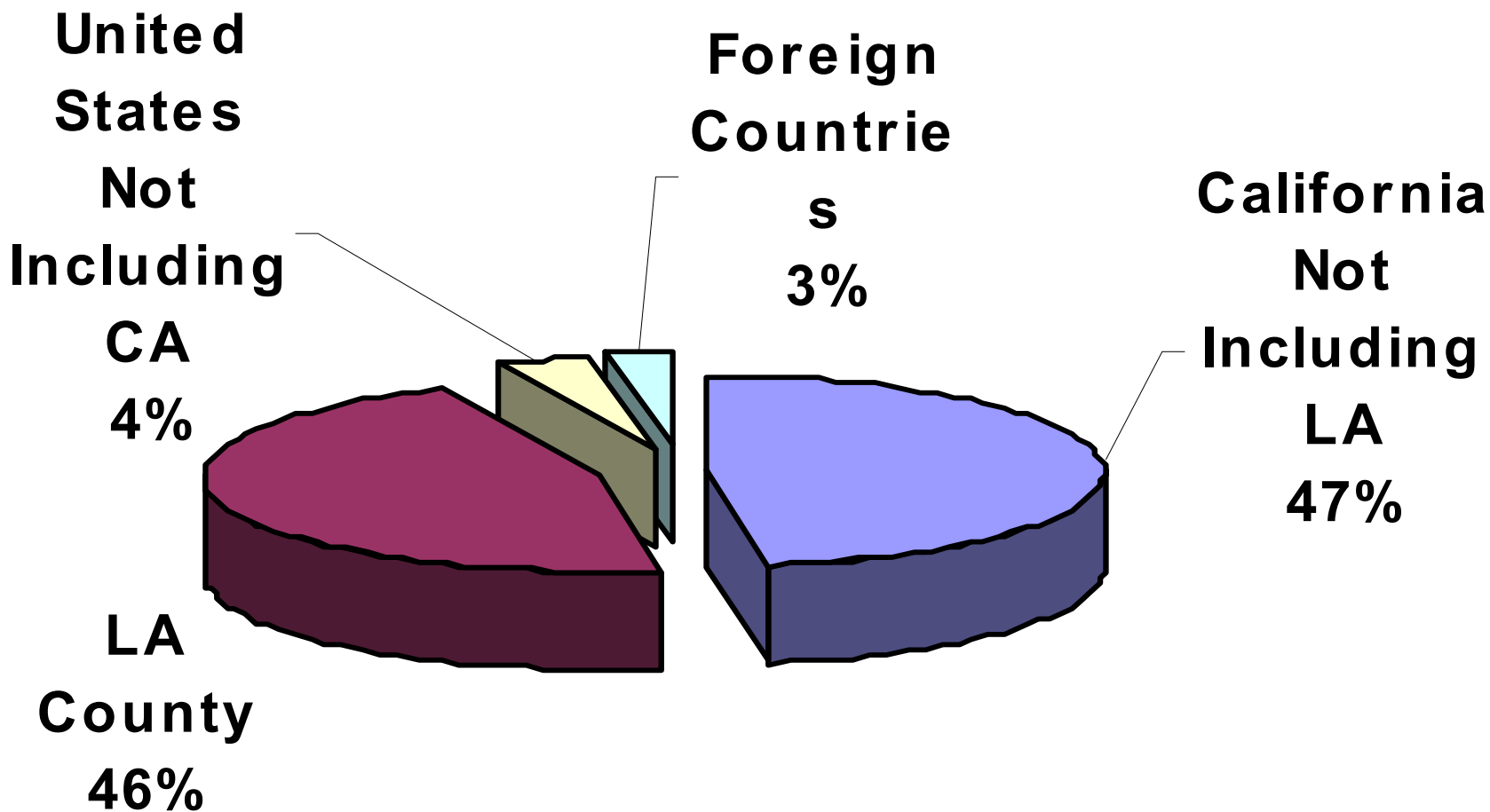
Sources: APB, CIRP Trends Data,
YFCY 2002

Gender Distribution of Graduate Students



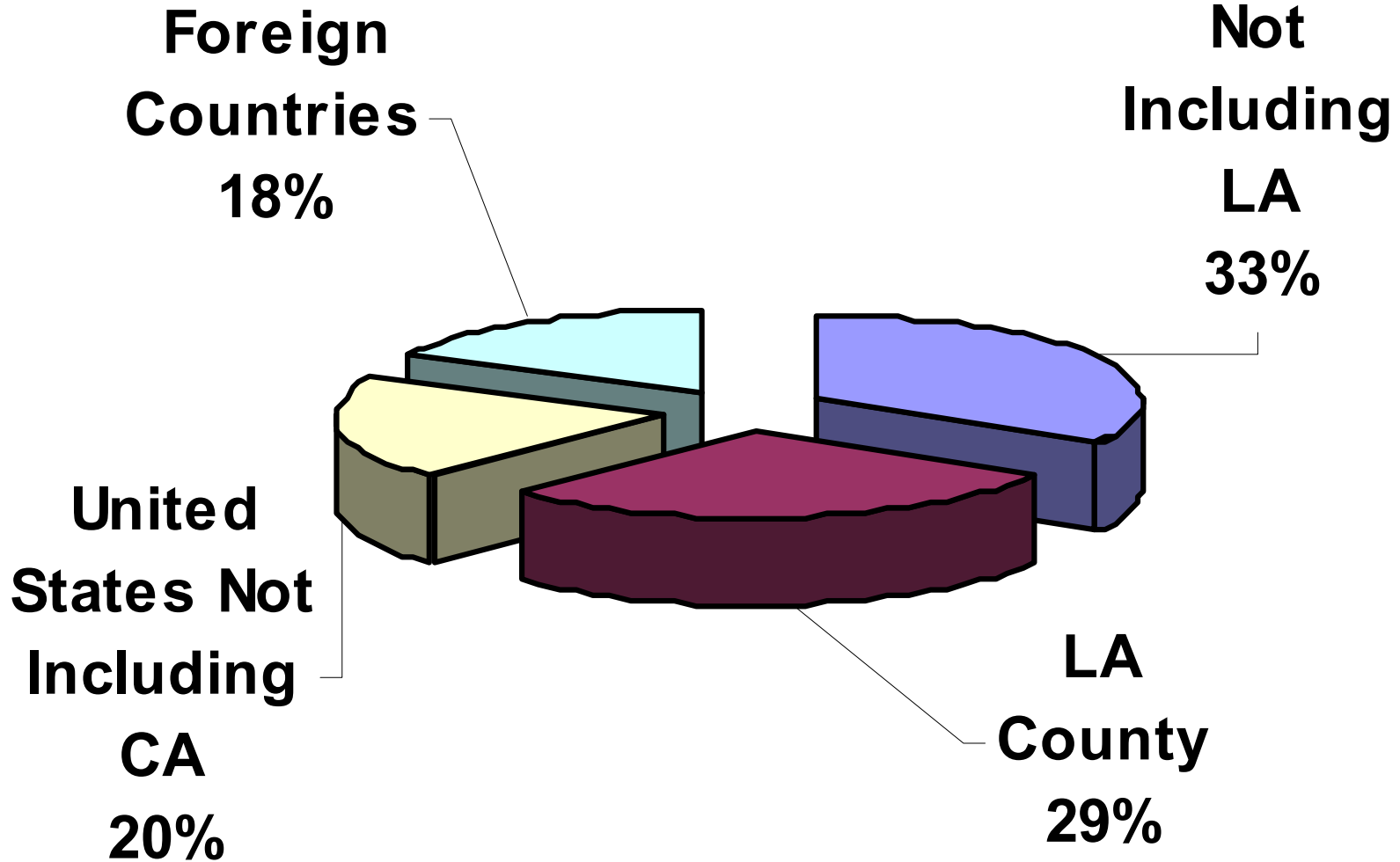
Sources: APB, CIRP Trends Data,
YFCY 2002

Geographic Origin of Undergraduates Fall 2001



Sources: APB, CIRP Trends Data,
YFCY 2002

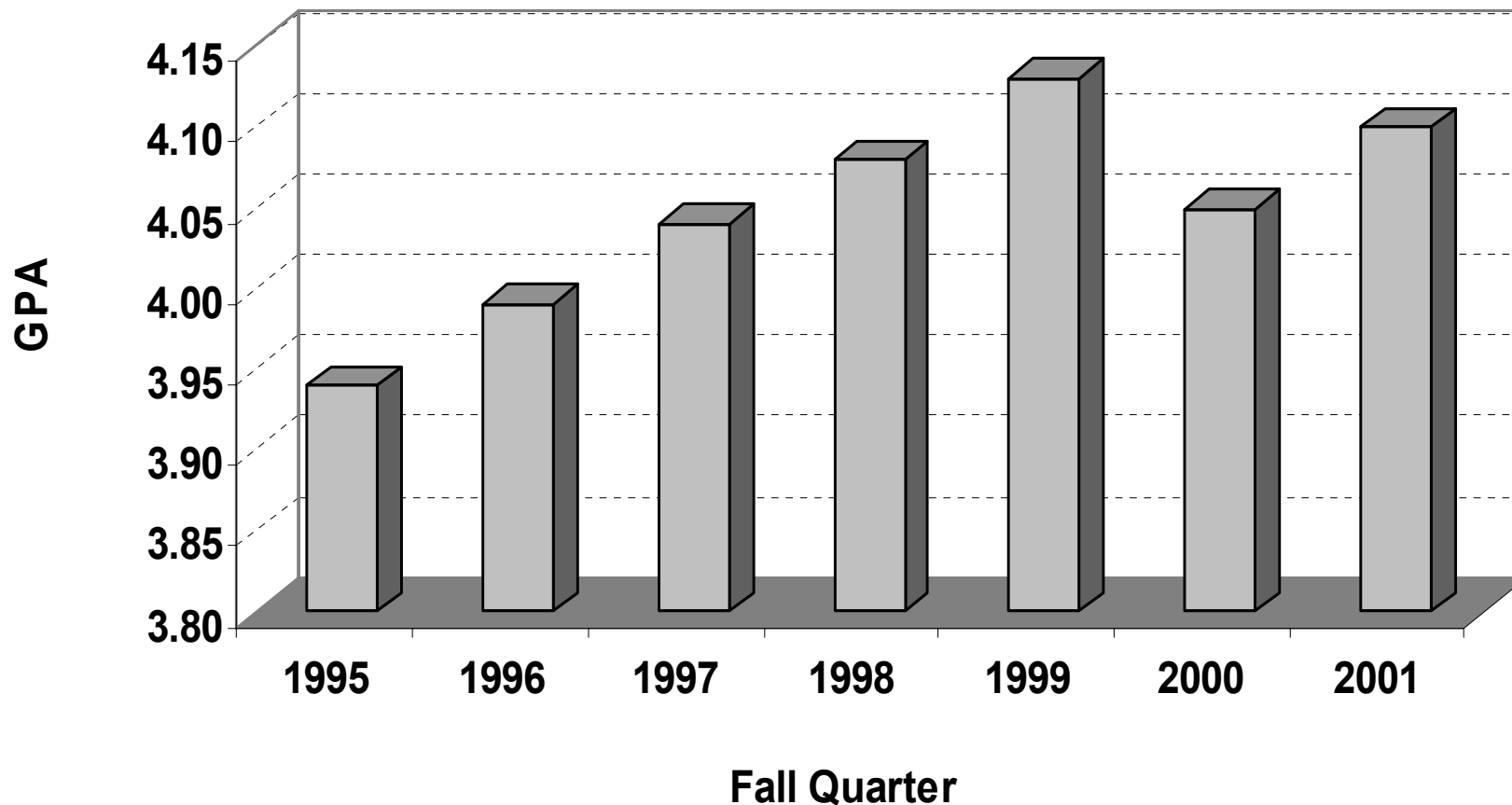
Geographic Origin of Graduate Students Fall 2001



Sources: APB, CIRP Trends Data,
YFCY 2002

Average Entering GPA for First-Time First-Year Students

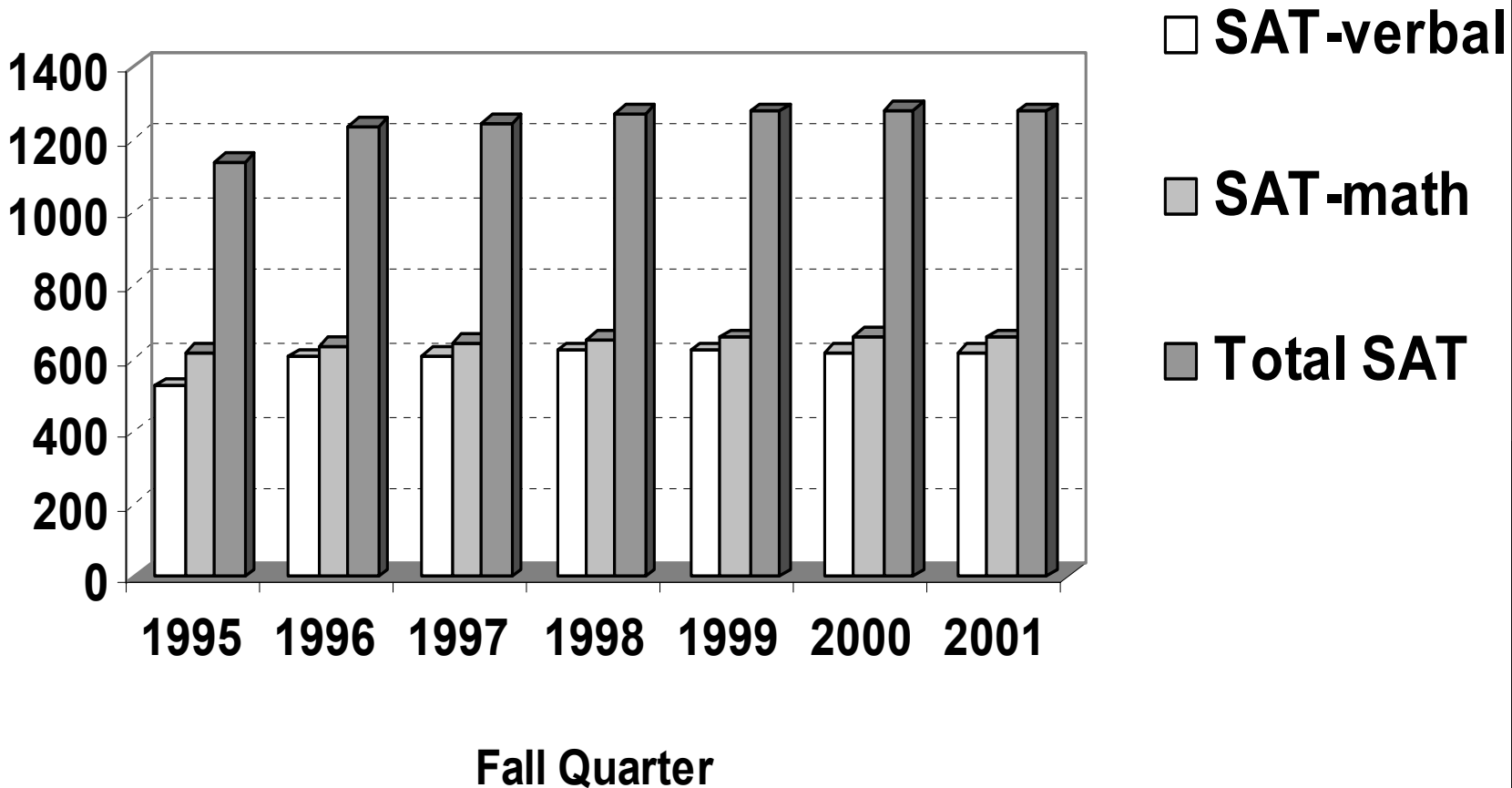
Fall 1995-Fall 2001



Sources: APB, CIRP Trends Data,
YFCY 2002

Average SAT Scores For First-Time First-Year Students

Fall 1995 -Fall 2001



Sources: APB, CIRP Trends Data,
YFCY 2002

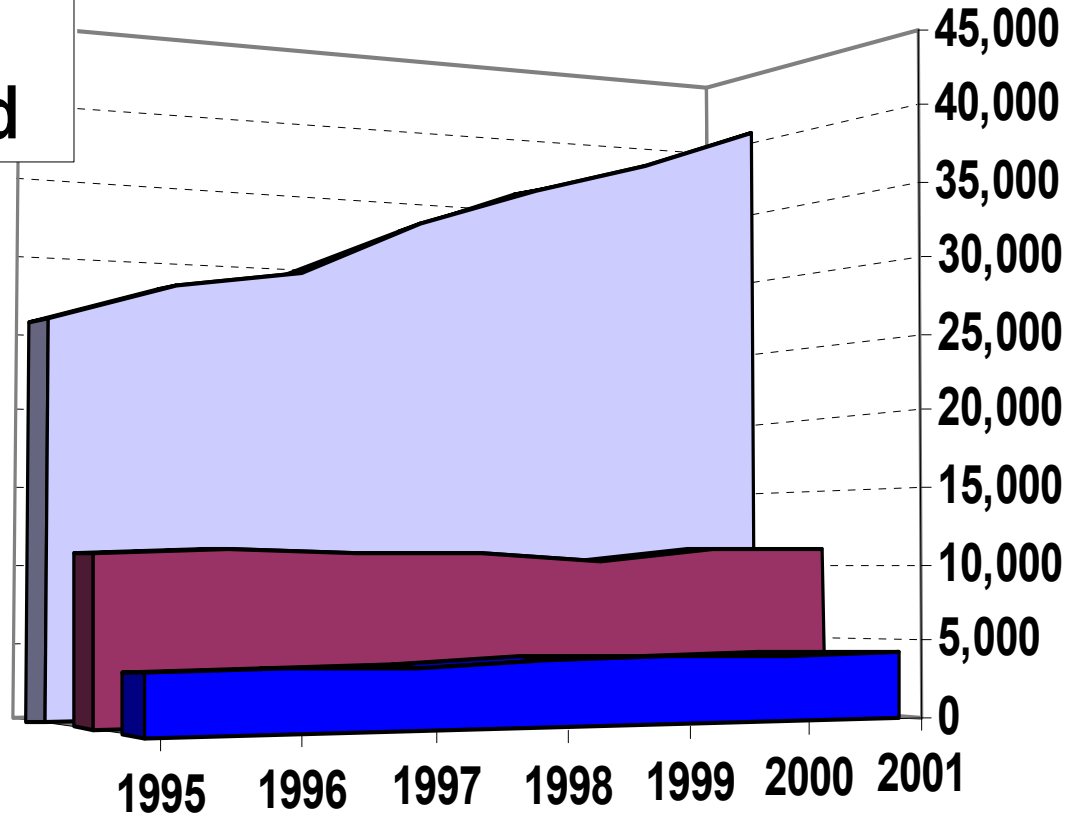
First-Year-College Admissions and Yield

Fall 1995-Fall 2001

Applications

Admits

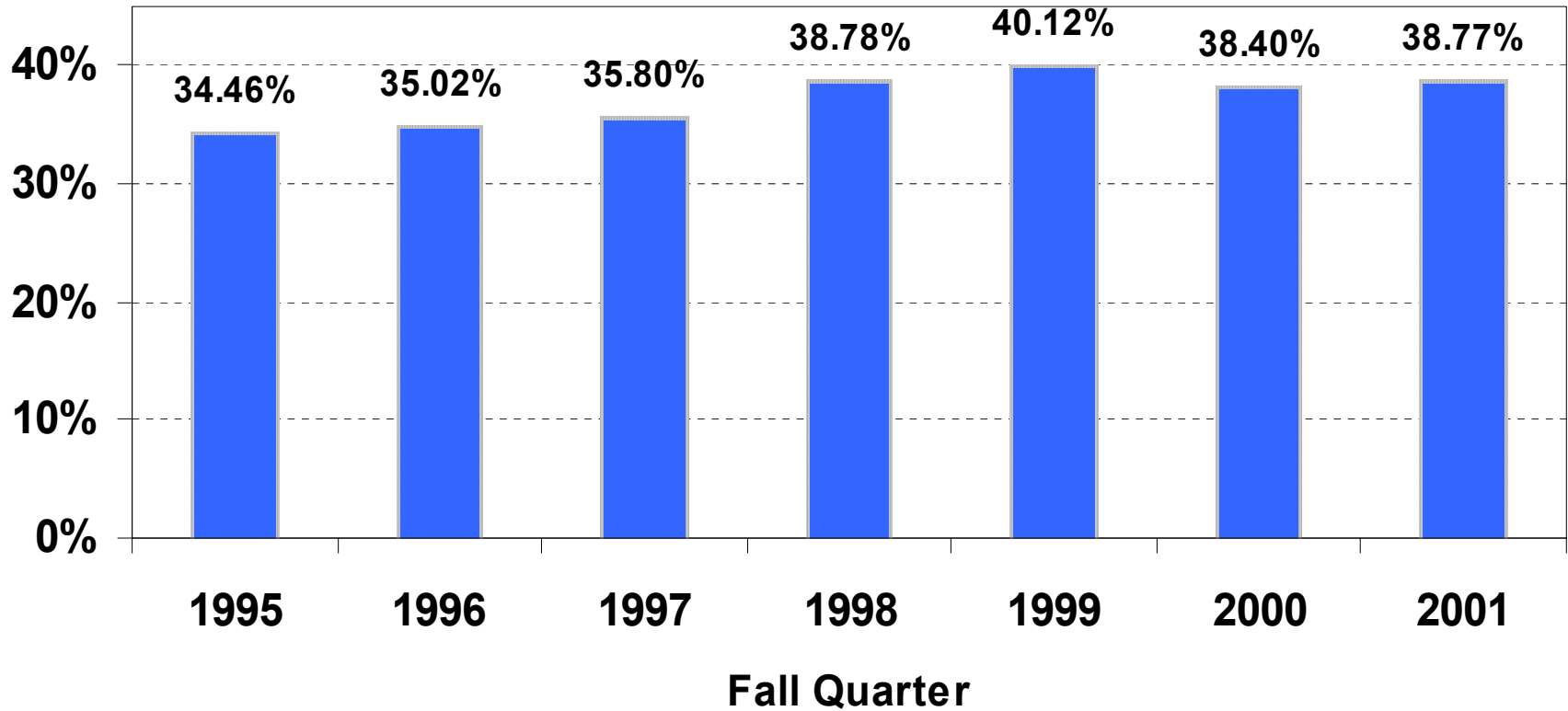
Registered



Sources: APB, CIRP Trends Data,
YFCY 2002

Percent of Applicants Admitted

Fall 1995 - Fall 2001

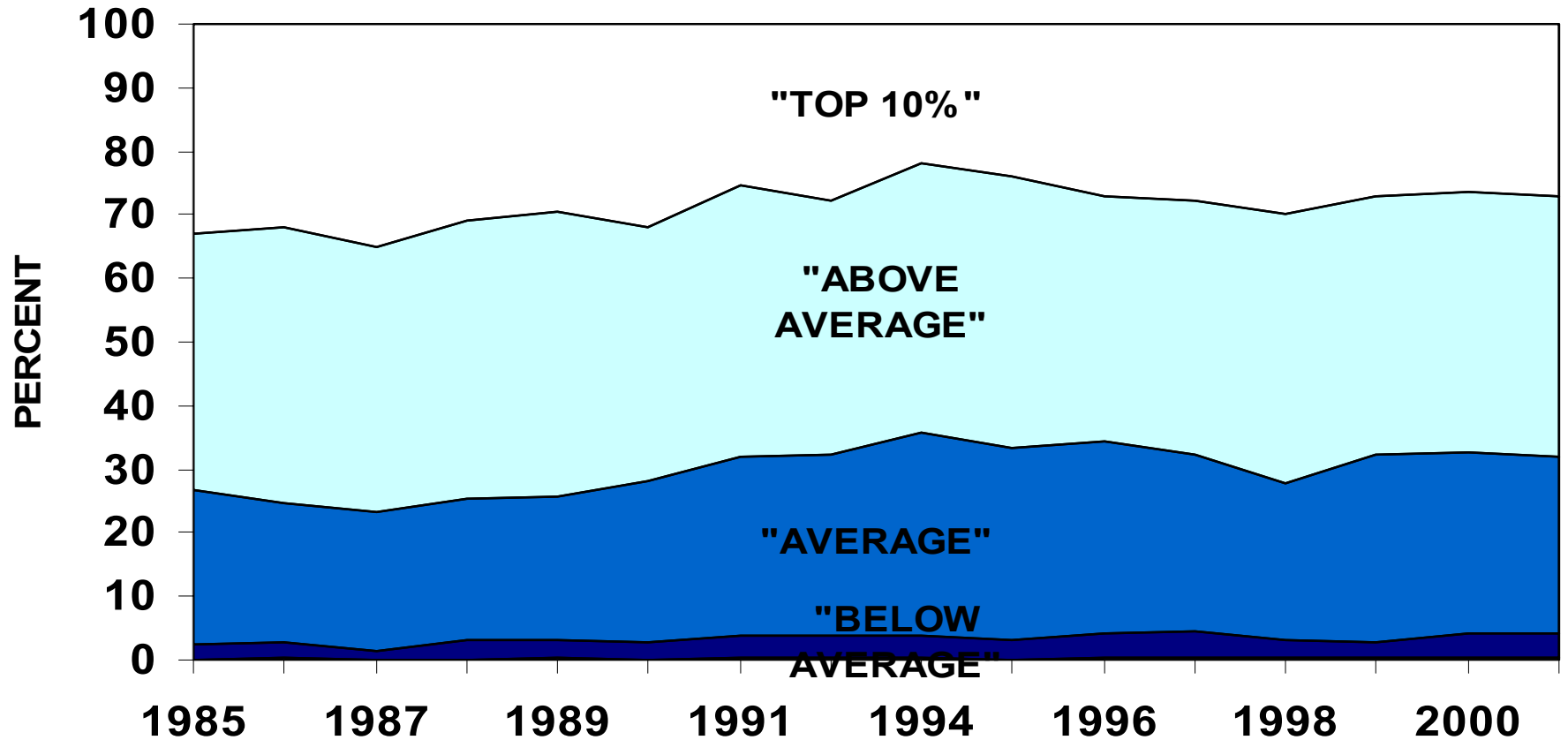


Sources: APB, CIRP Trends Data,
YFCY 2002

III. Health and Health Habits of Incoming and First-Year Students

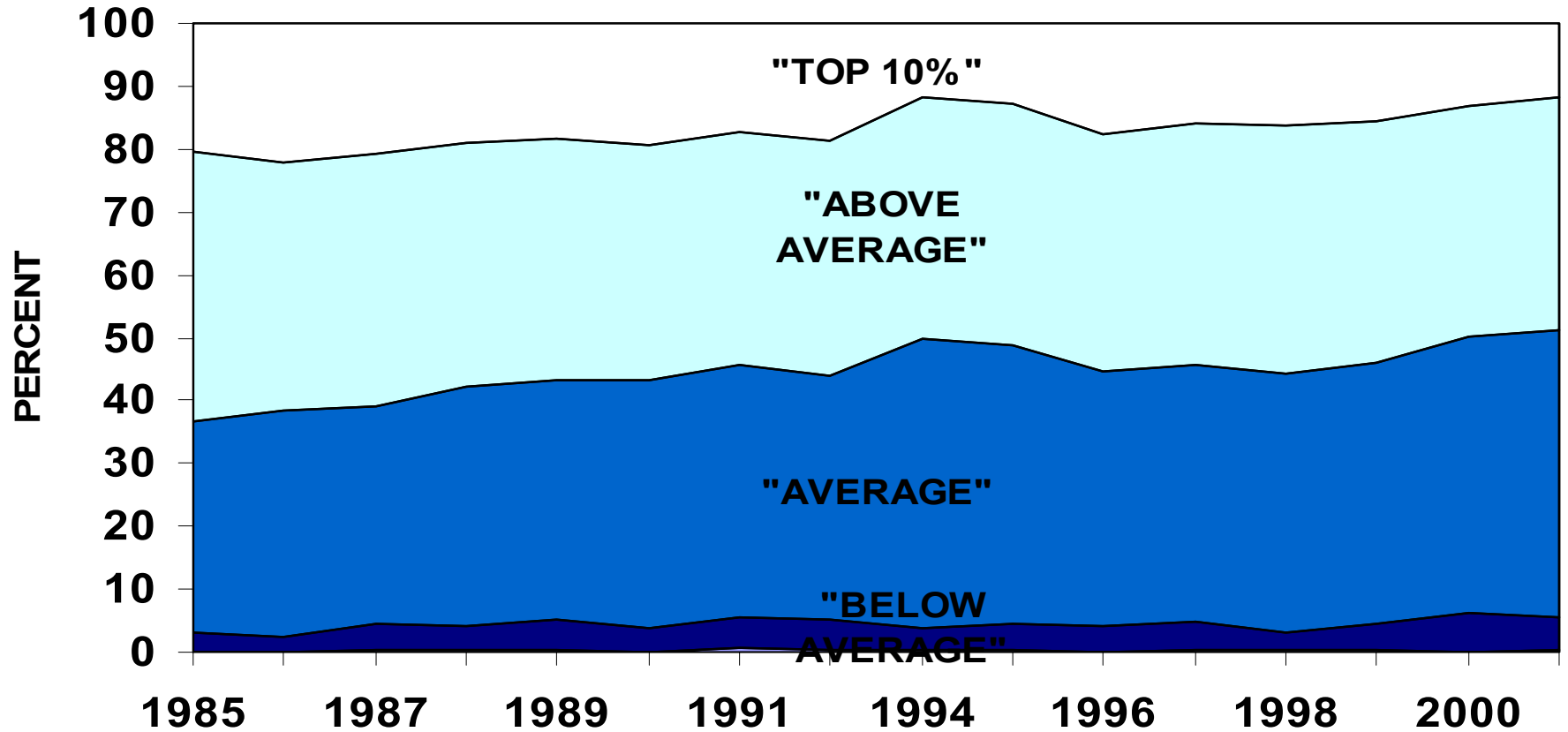
A. Physical Health

SELF-RATED PHYSICAL HEALTH DURING HIGH SCHOOL SENIOR YEAR MALE (1985-2001)



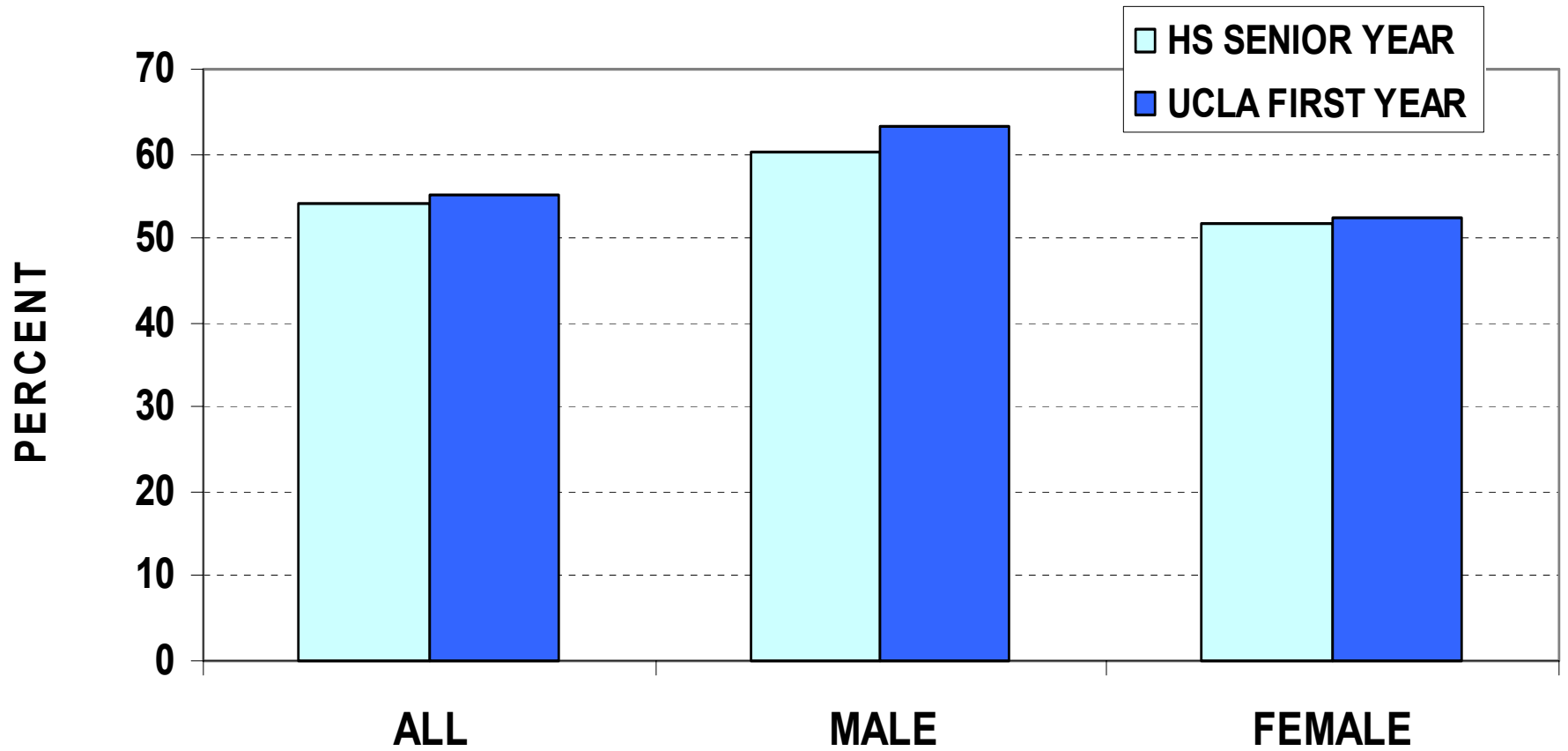
Sources: APB, CIRP Trends Data,
YFCY 2002

SELF-RATED PHYSICAL HEALTH DURING HIGH SCHOOL SENIOR YEAR FEMALE (1985-2001)



Sources: APB, CIRP Trends Data,
YFCY 2002

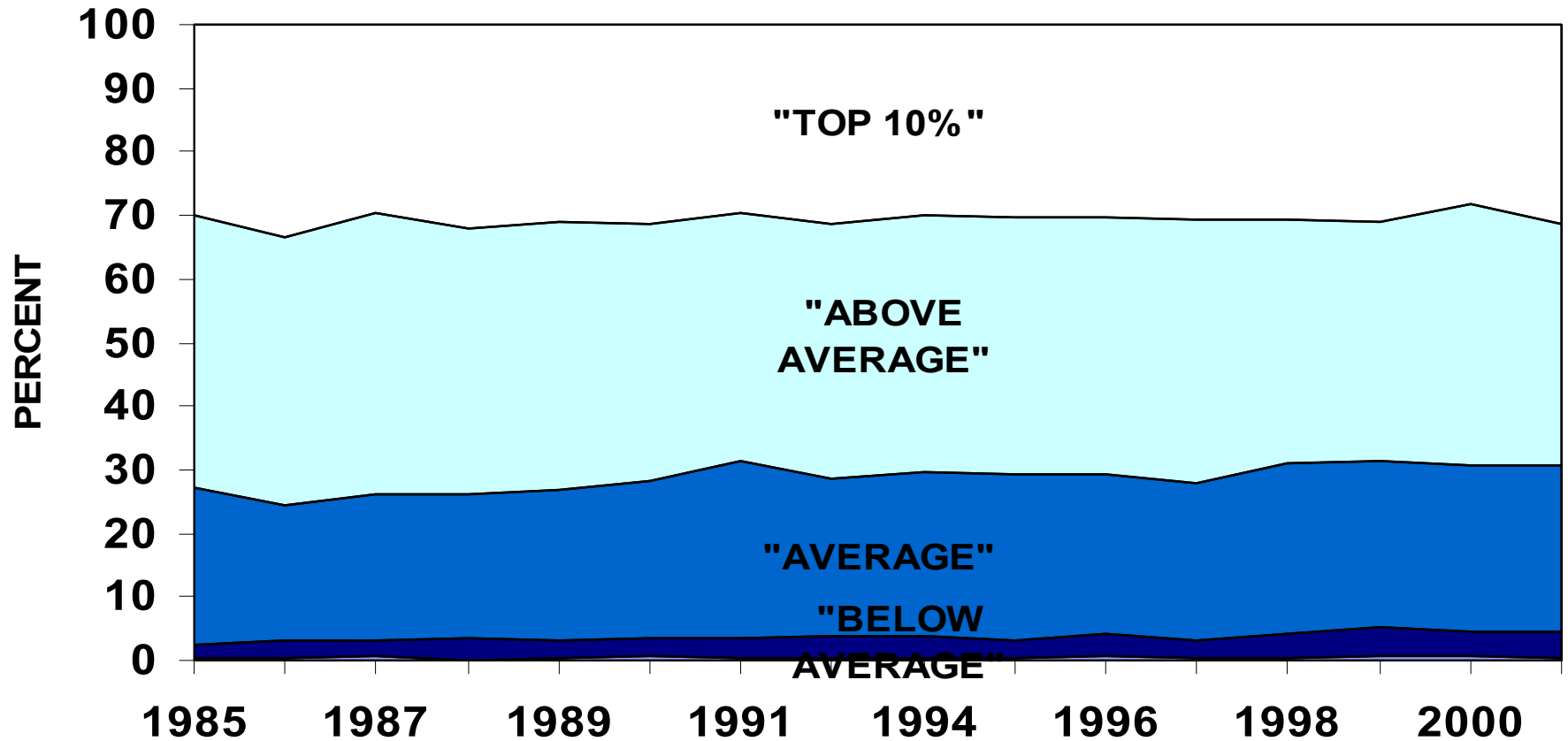
Self-Rated "Above Average" or "Top 10%" in Emotional Health: HS Senior Year and UCLA First Year



Sources: APB, CIRP Trends Data,
YFCY 2002

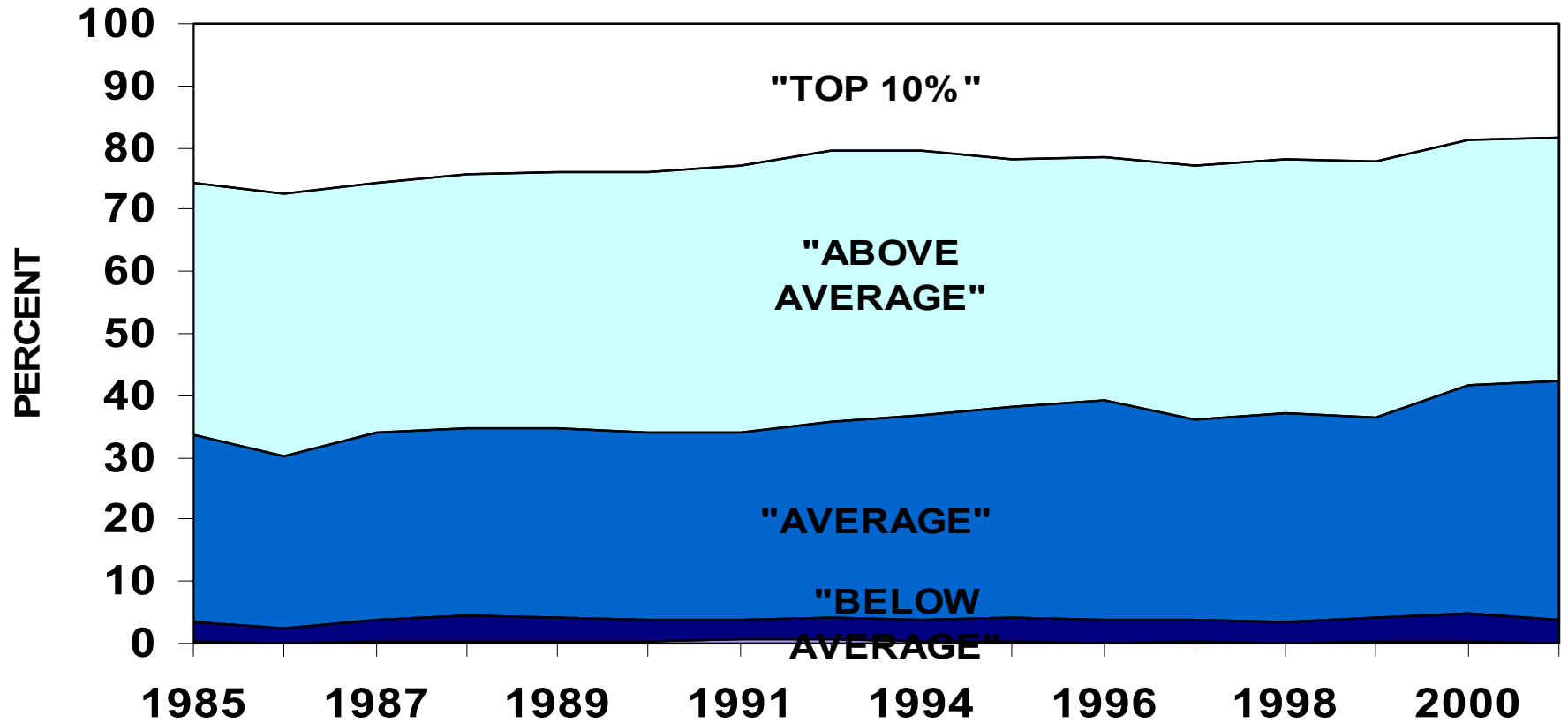
B. Emotional Well-being

SELF-RATED EMOTIONAL HEALTH DURING HIGH SCHOOL SENIOR YEAR MALE (1985-2001)



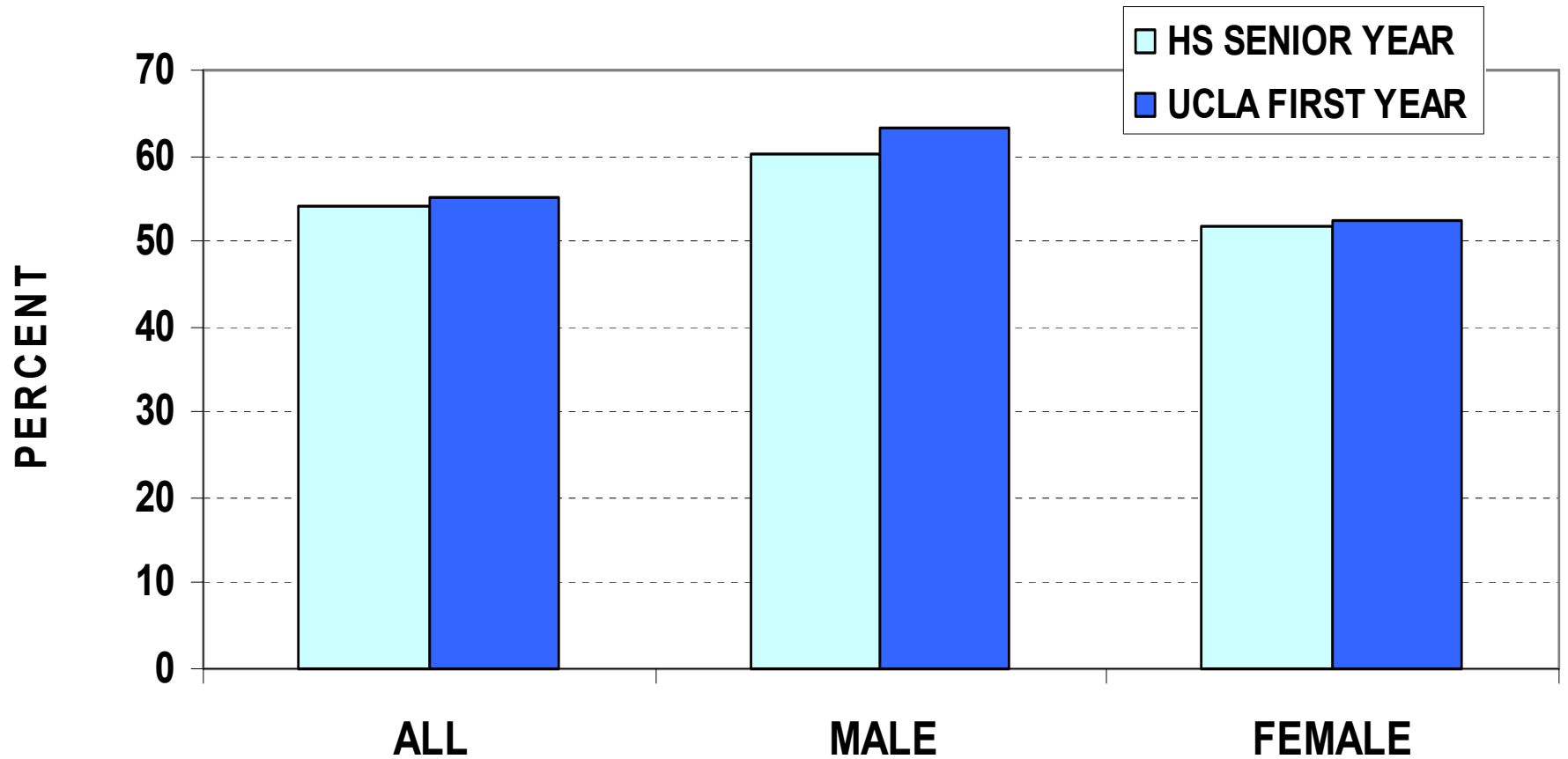
Sources: APB, CIRP Trends Data,
YFCY 2002

SELF-RATED EMOTIONAL HEALTH DURING HIGH SCHOOL SENIOR YEAR FEMALE (1985-2001)



Sources: APB, CIRP Trends Data,
YFCY 2002

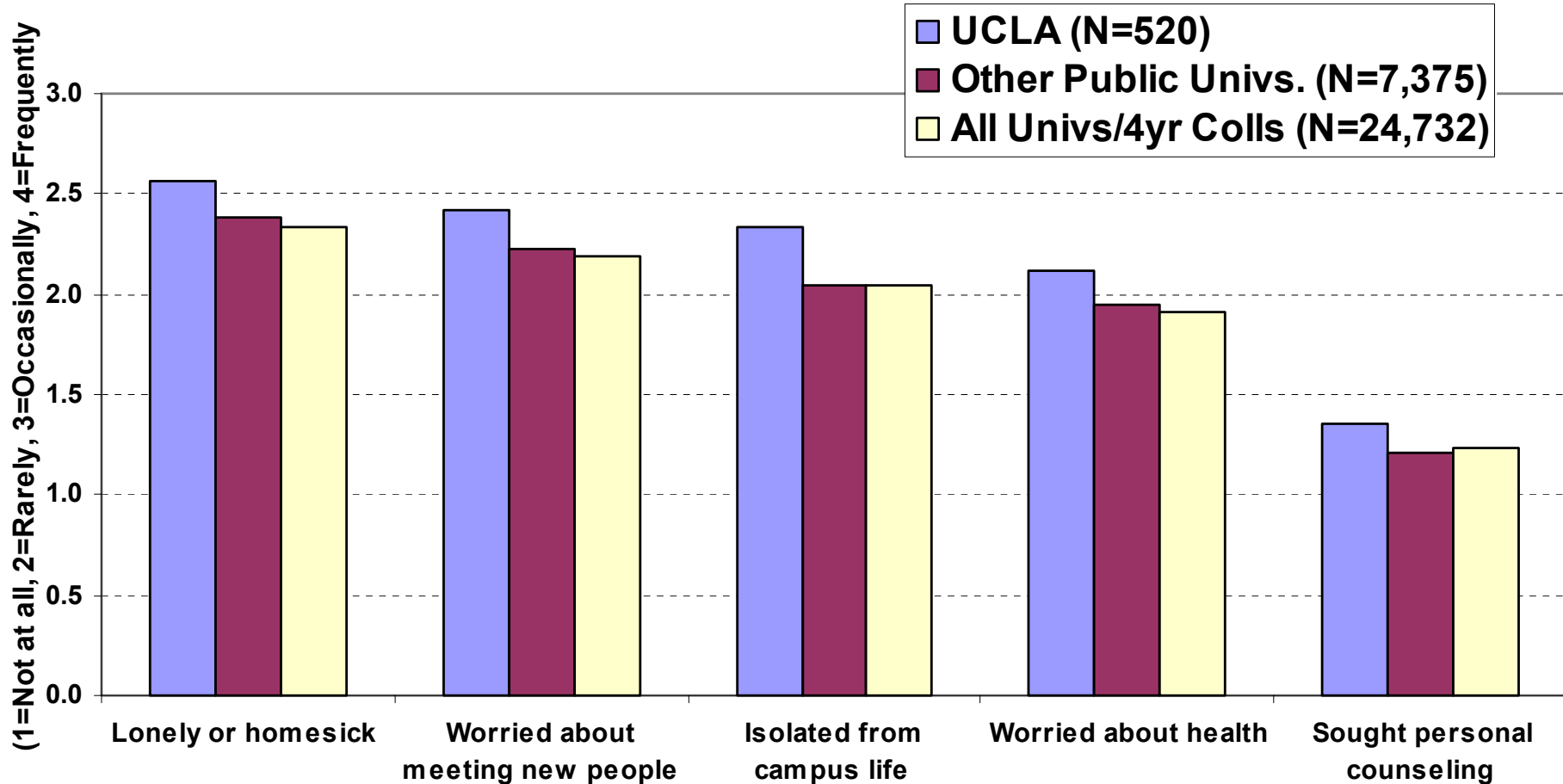
Self-Rated "Above Average" or "Top 10%" in Emotional Health: HS Senior Year and UCLA First Year



Sources: APB, CIRP Trends Data,
YFCY 2002

Average Scores on Self-Rated Emotional Well-being in First Year: UCLA and National Norms * (2002)

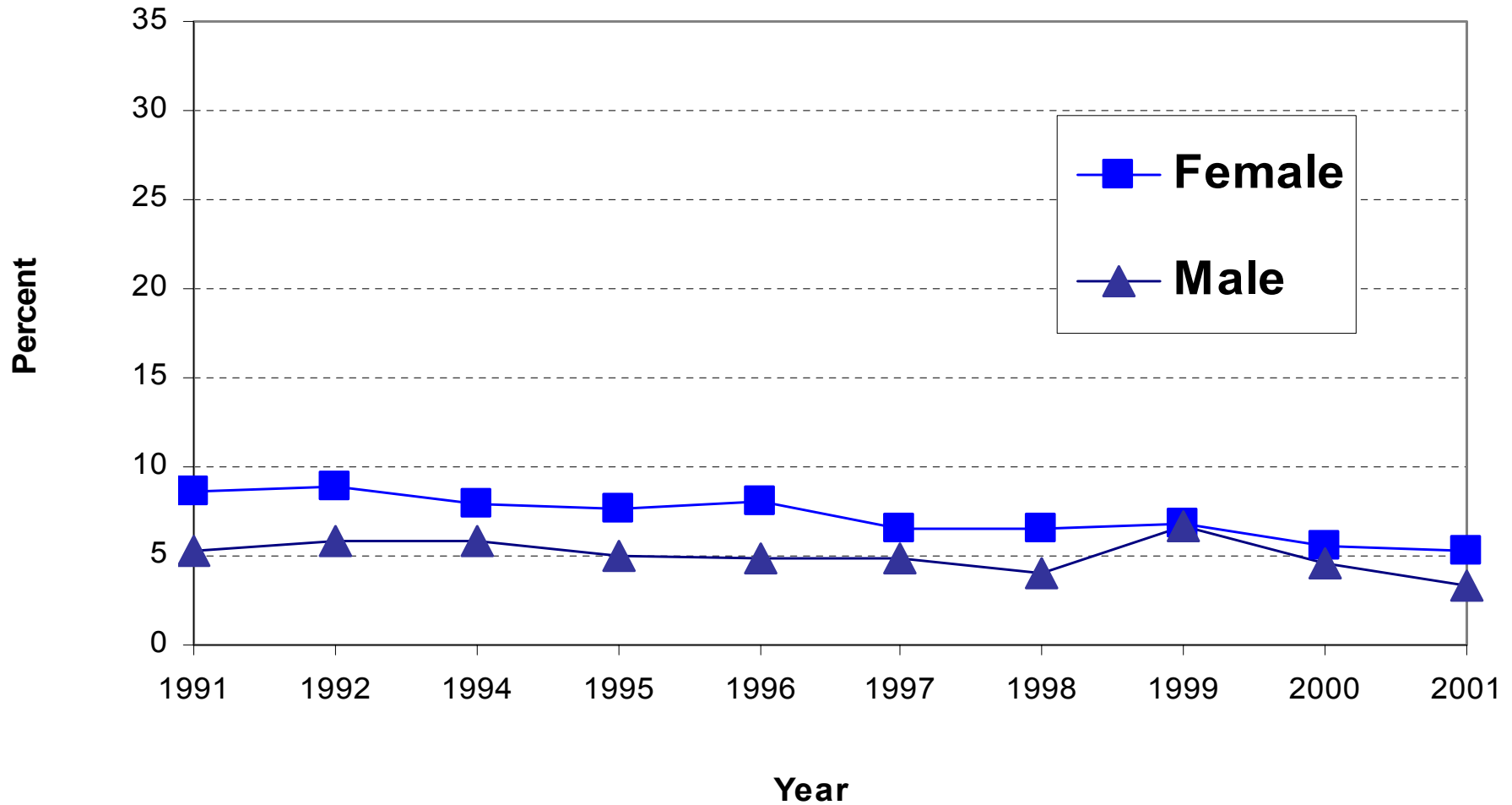
* The difference is statistically significant at 99% confidence level.



Sources: APB, CIRP Trends Data,
YFCY 2002

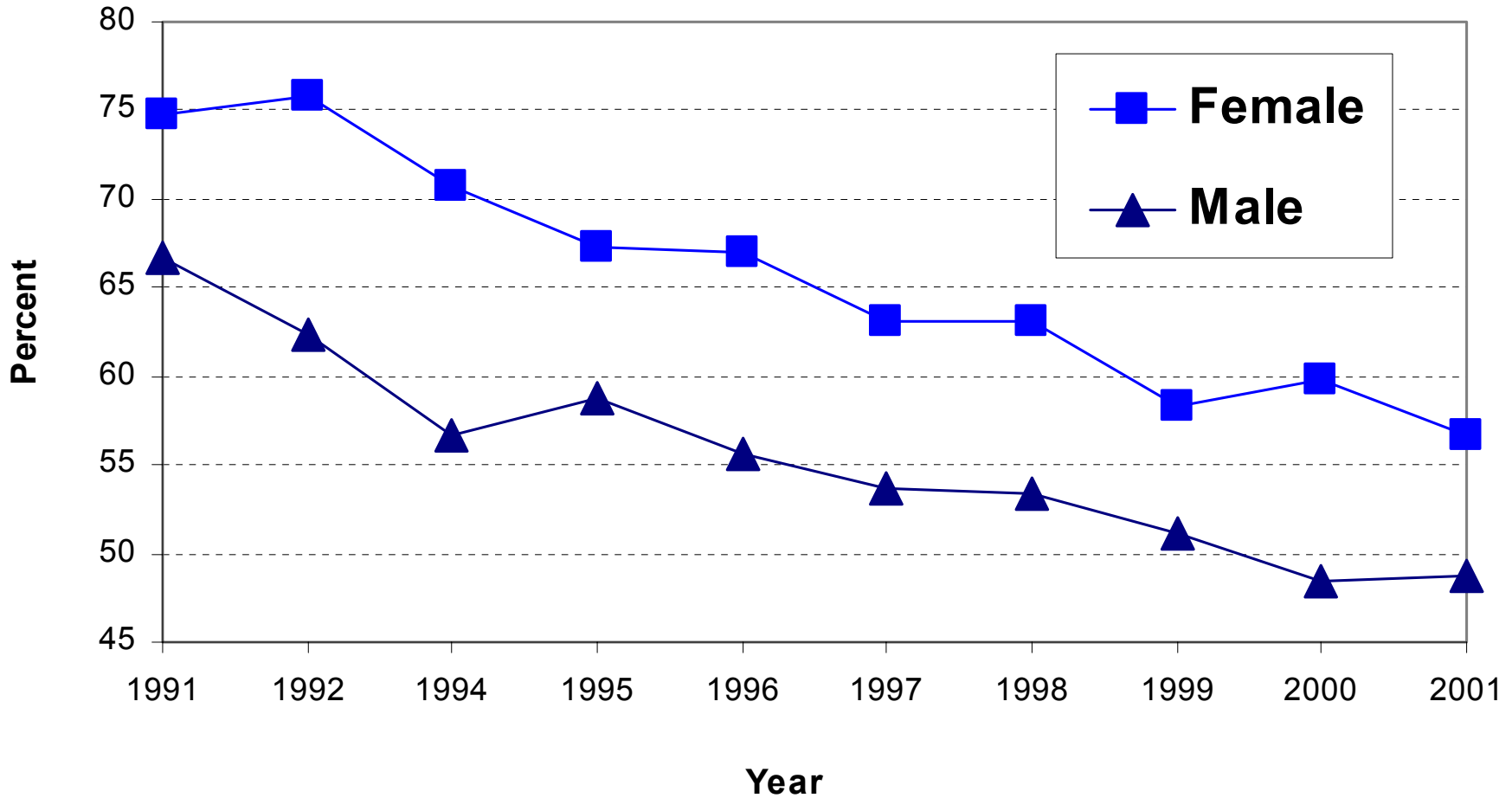
C. Stress

Frequently Felt Depressed During HS Senior Year (1991-2001)



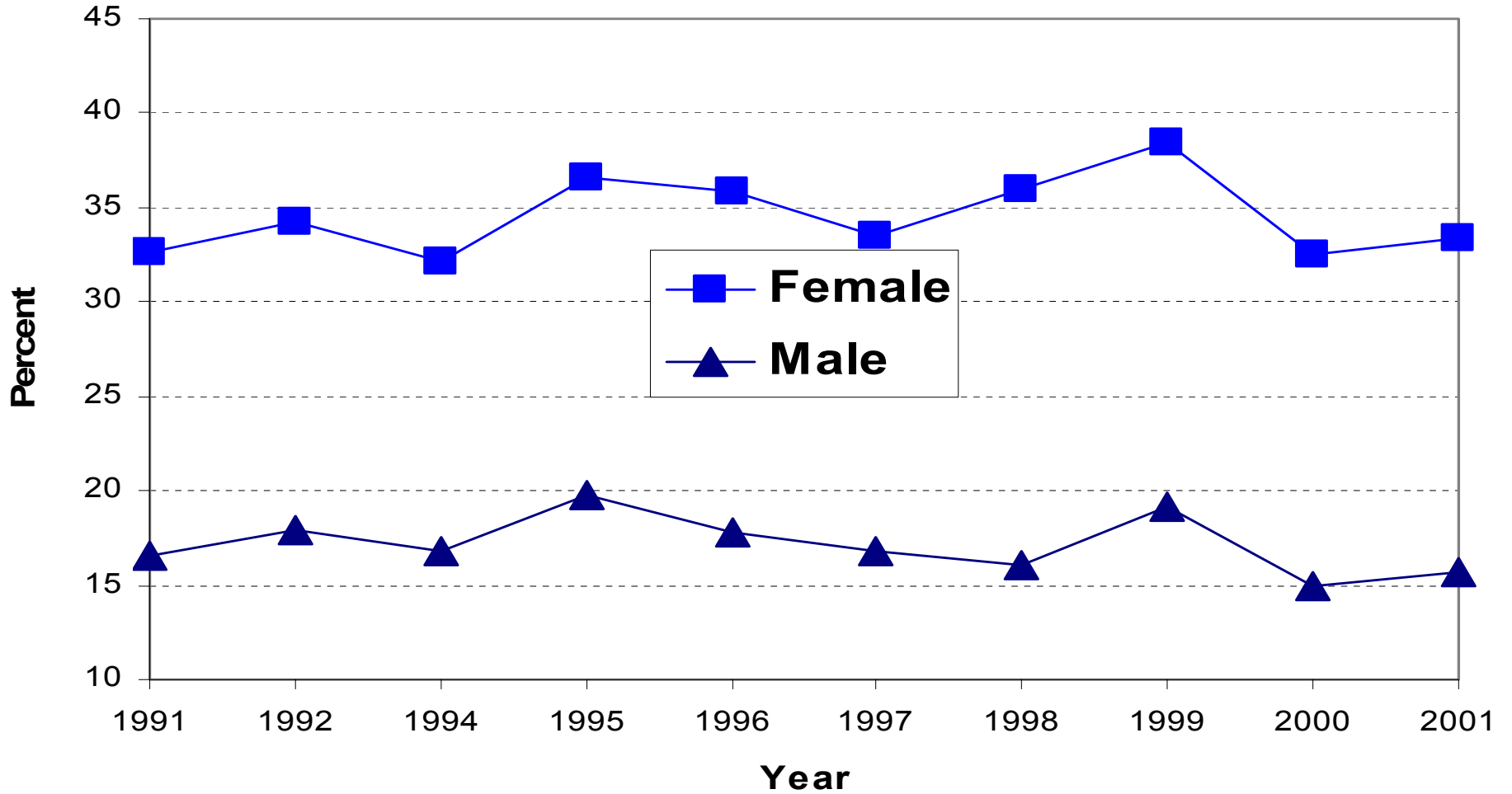
Sources: APB, CIRP Trends Data,
YFCY 2002

Occasionally Felt Depressed During HS Senior Year (1991-2001)



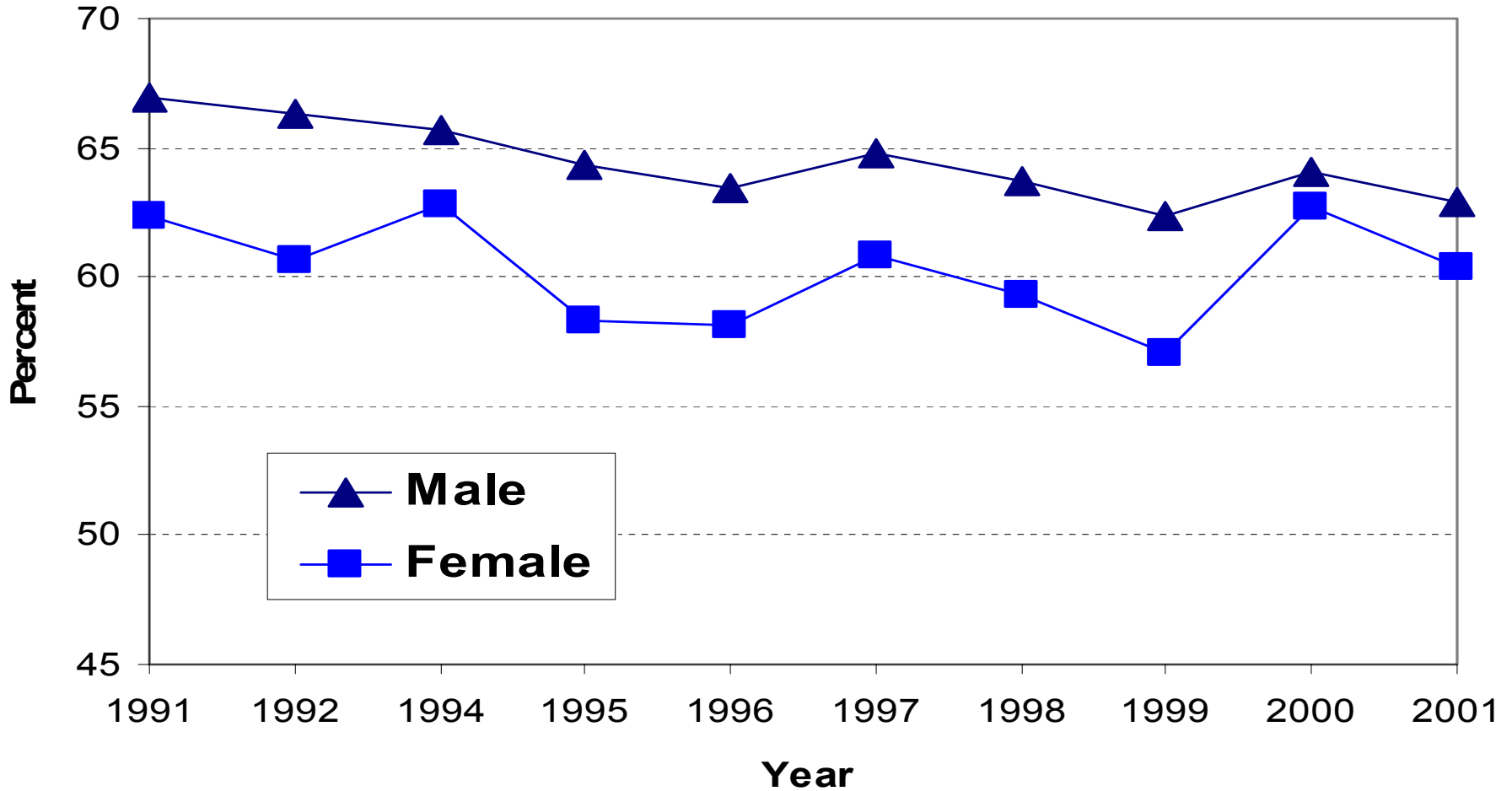
Sources: APB, CIRP Trends Data,
YFCY 2002

Frequently Felt Overwhelmed During HS Senior Year (1991-2001)



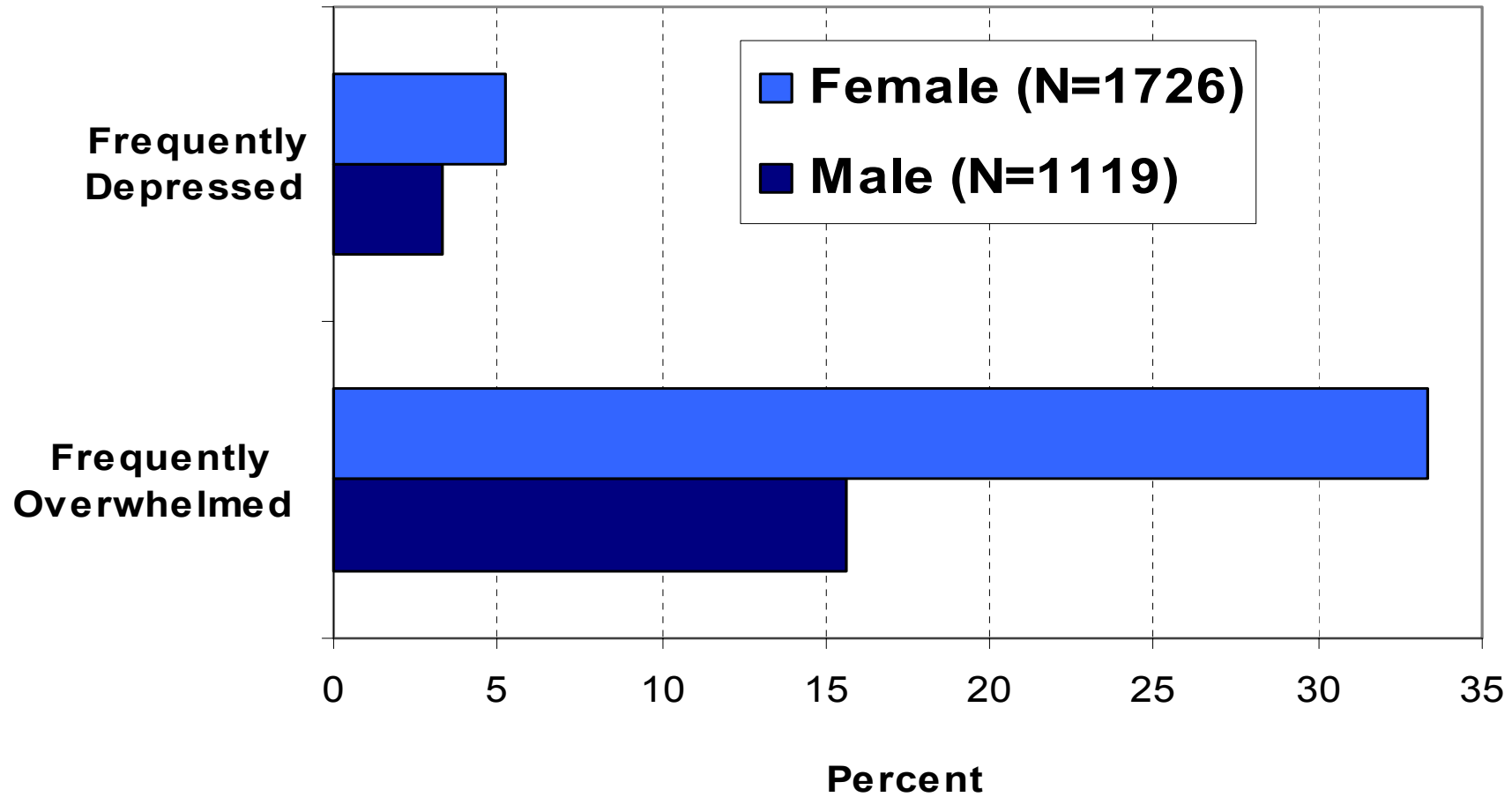
Sources: APB, CIRP Trends Data,
YFCY 2002

Occasionally Felt Overwhelmed During HS Senior Year (1991-2001)



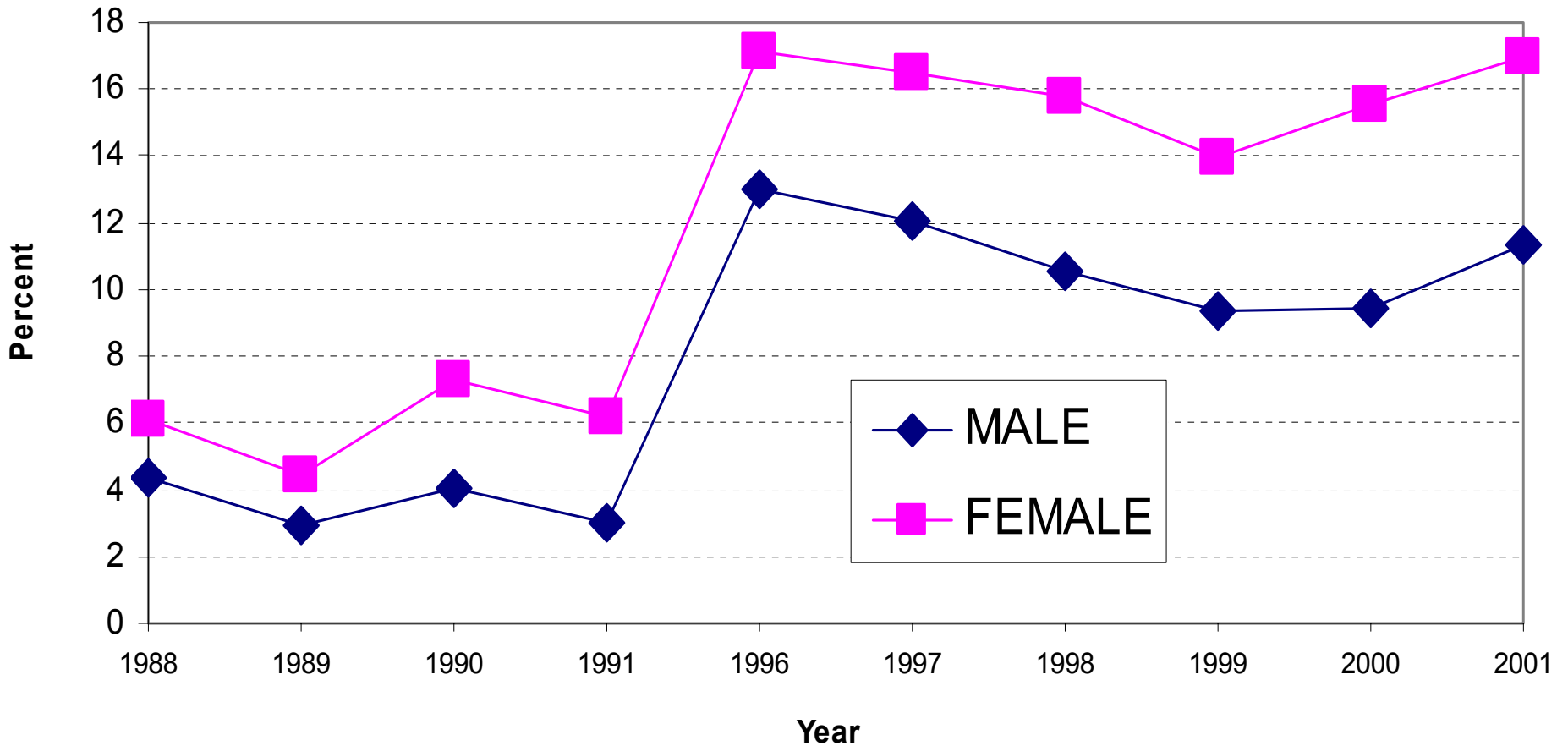
Sources: APB, CIRP Trends Data,
YFCY 2002

Frequently Overwhelmed or Depressed During HS Senior Year (2001)



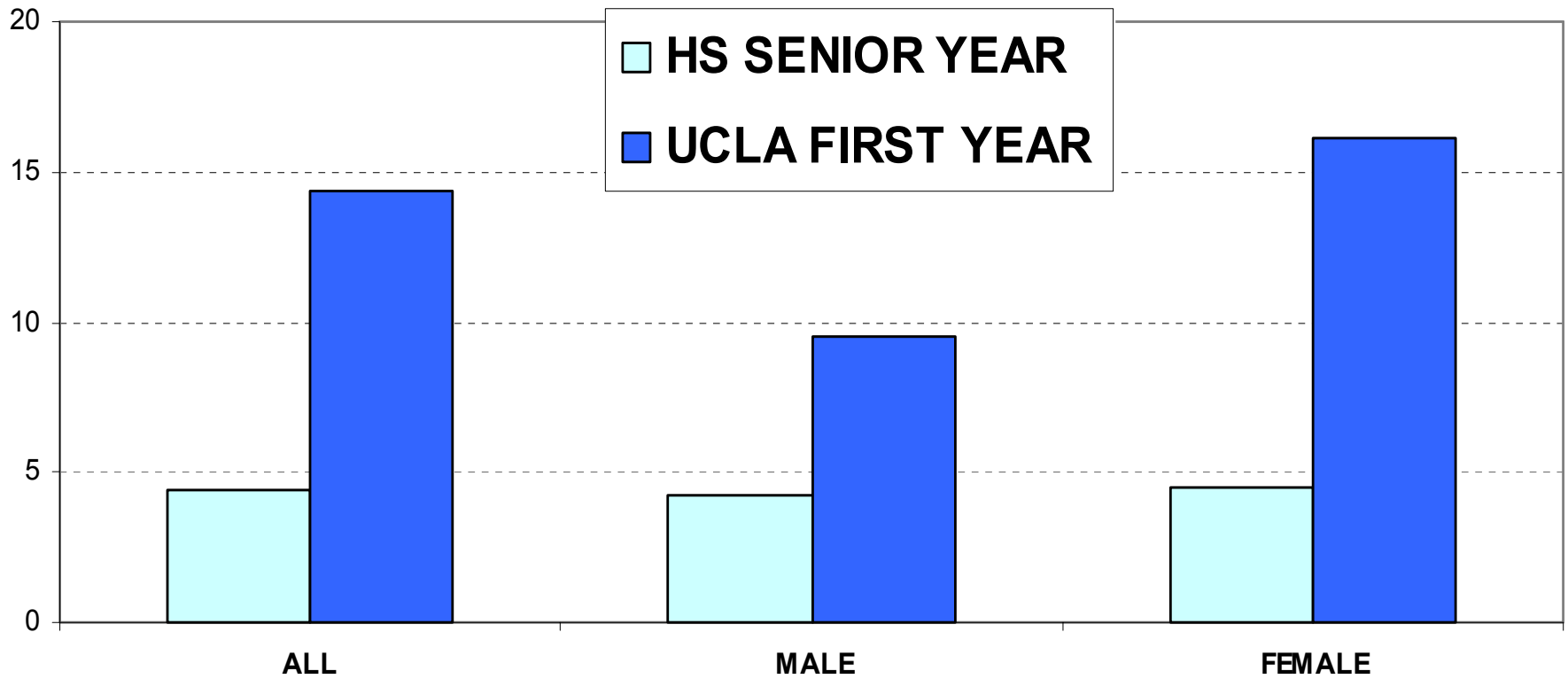
Sources: APB, CIRP Trends Data,
YFCY 2002

Self-estimated Having "A Very Good Chance to Seek Personal Counseling" (1988-2001)



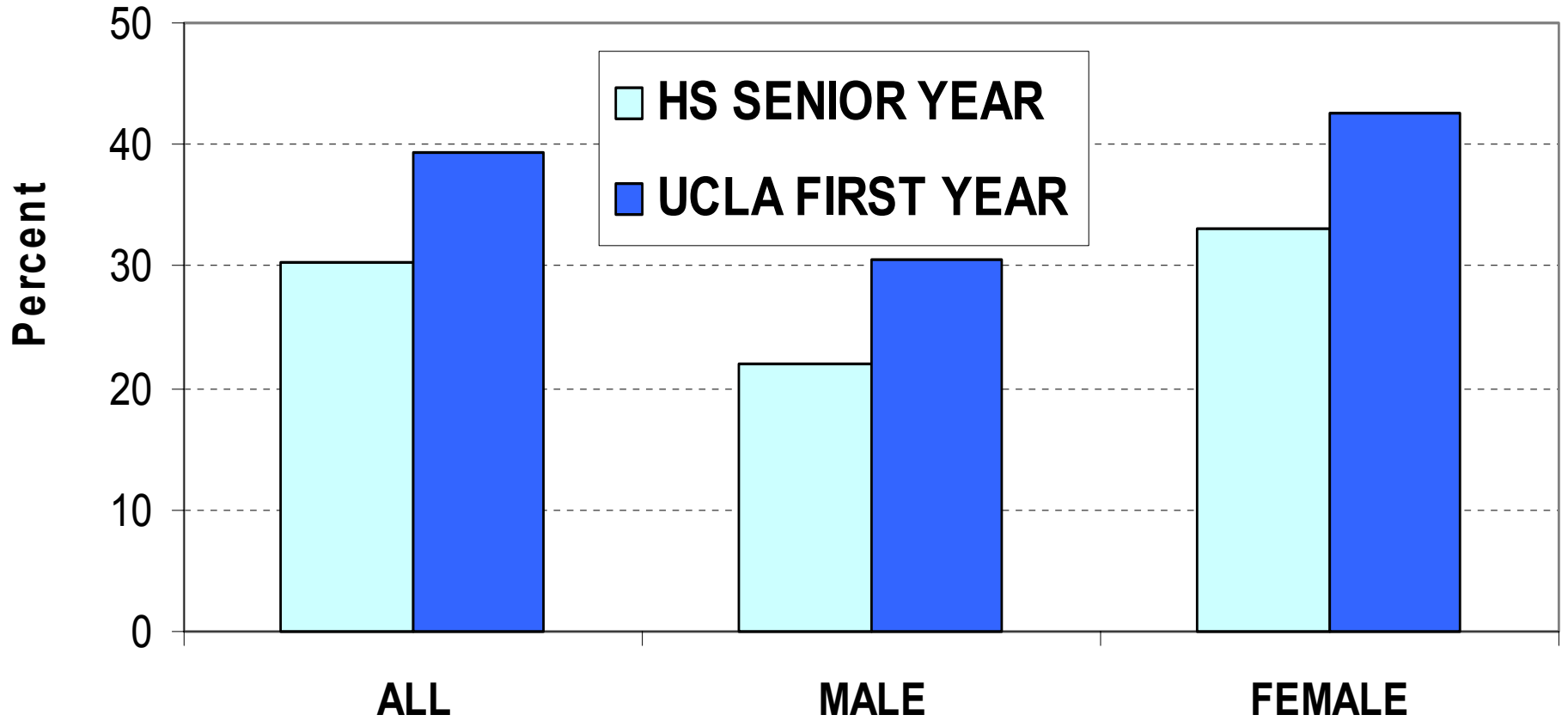
Sources: APB, CIRP Trends Data,
YFCY 2002

Frequently Felt Depressed: HS Senior Year and UCLA First Year (N=375)



Sources: APB, CIRP Trends Data,
YFCY 2002

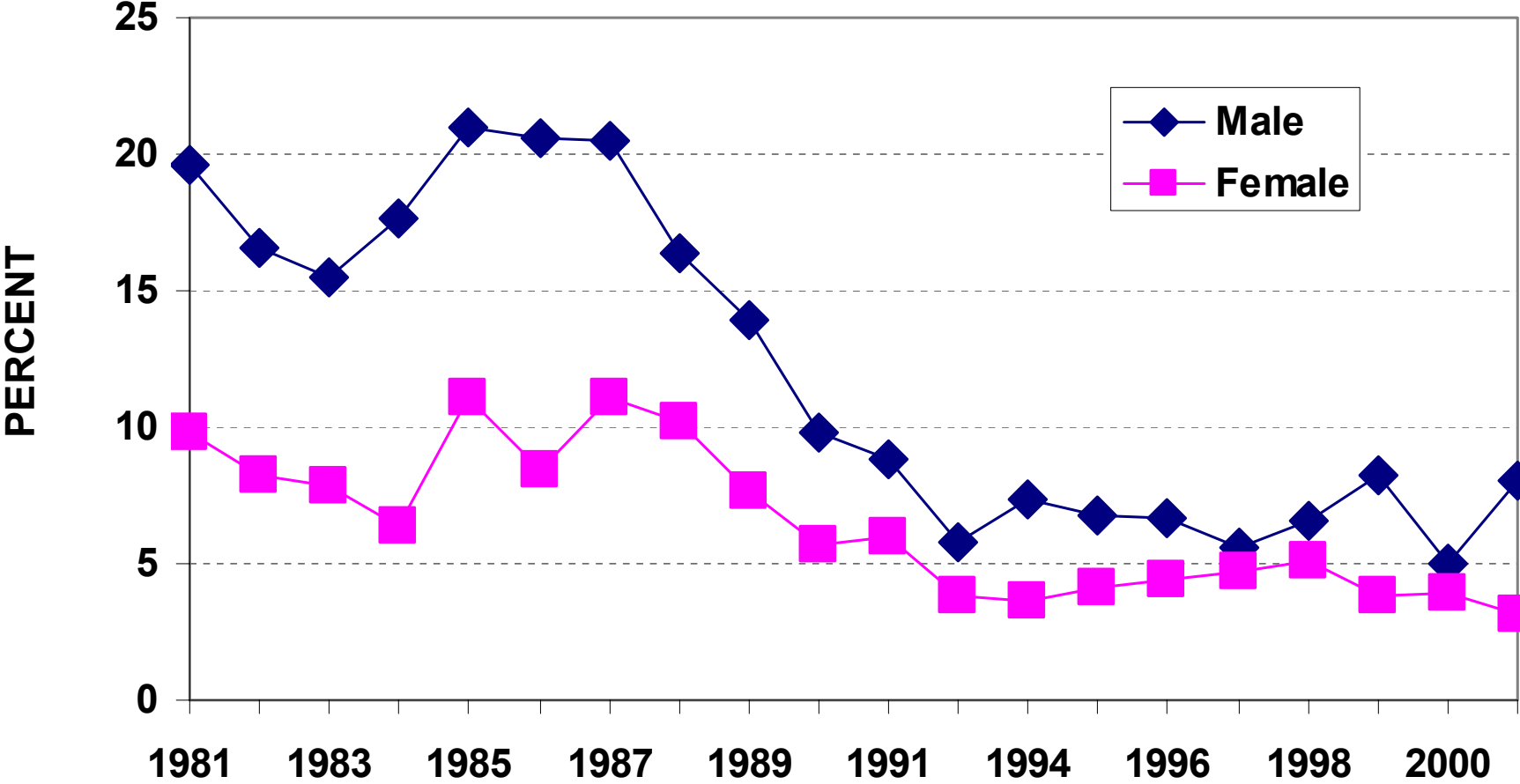
Frequently Felt Overwhelmed: HS Senior Year and UCLA First Year (N=375)



Sources: APB, CIRP Trends Data,
YFCY 2002

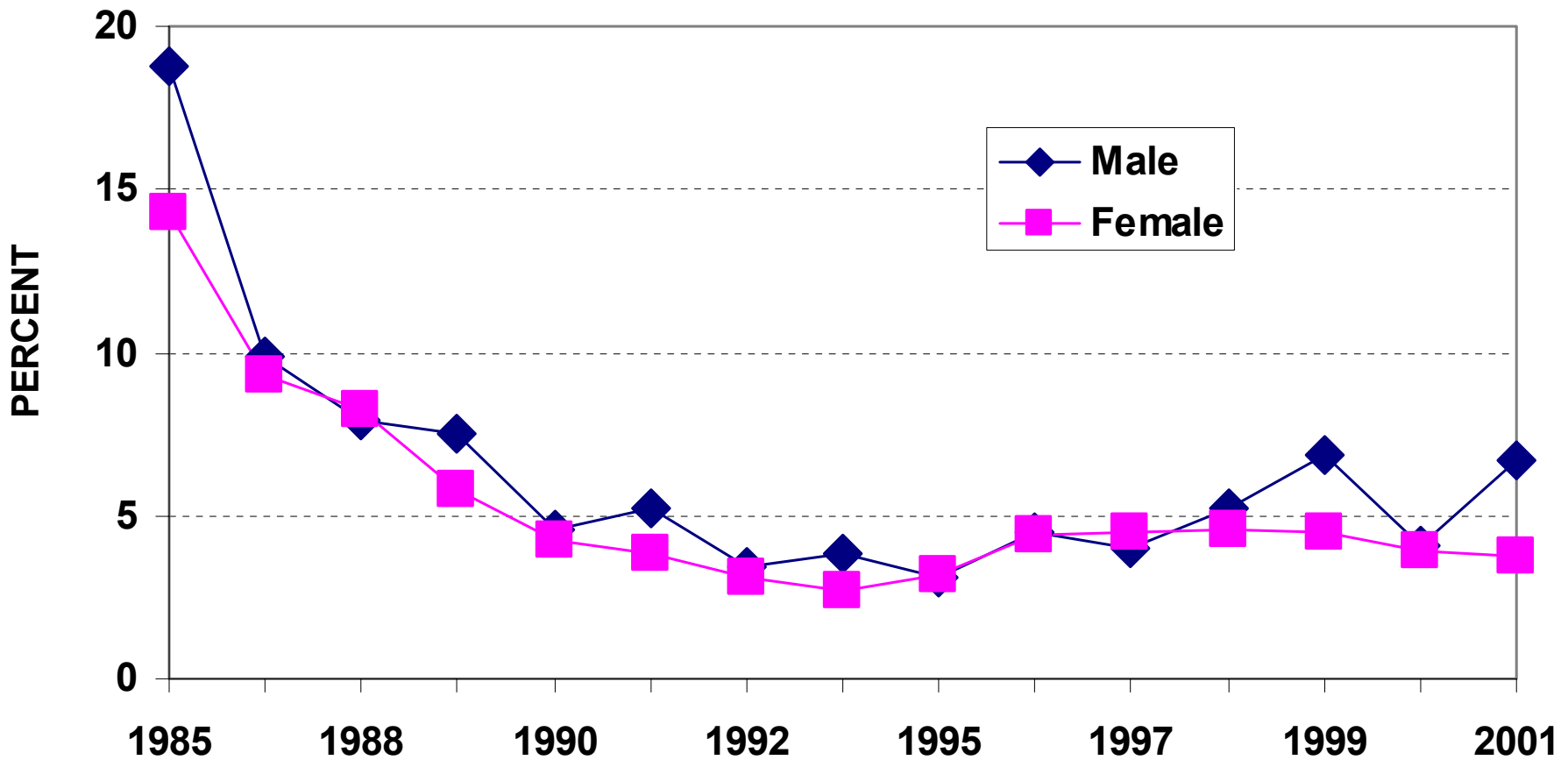
D. Drinking and Smoking

Drank Beer Frequently During HS Senior Year: 2001



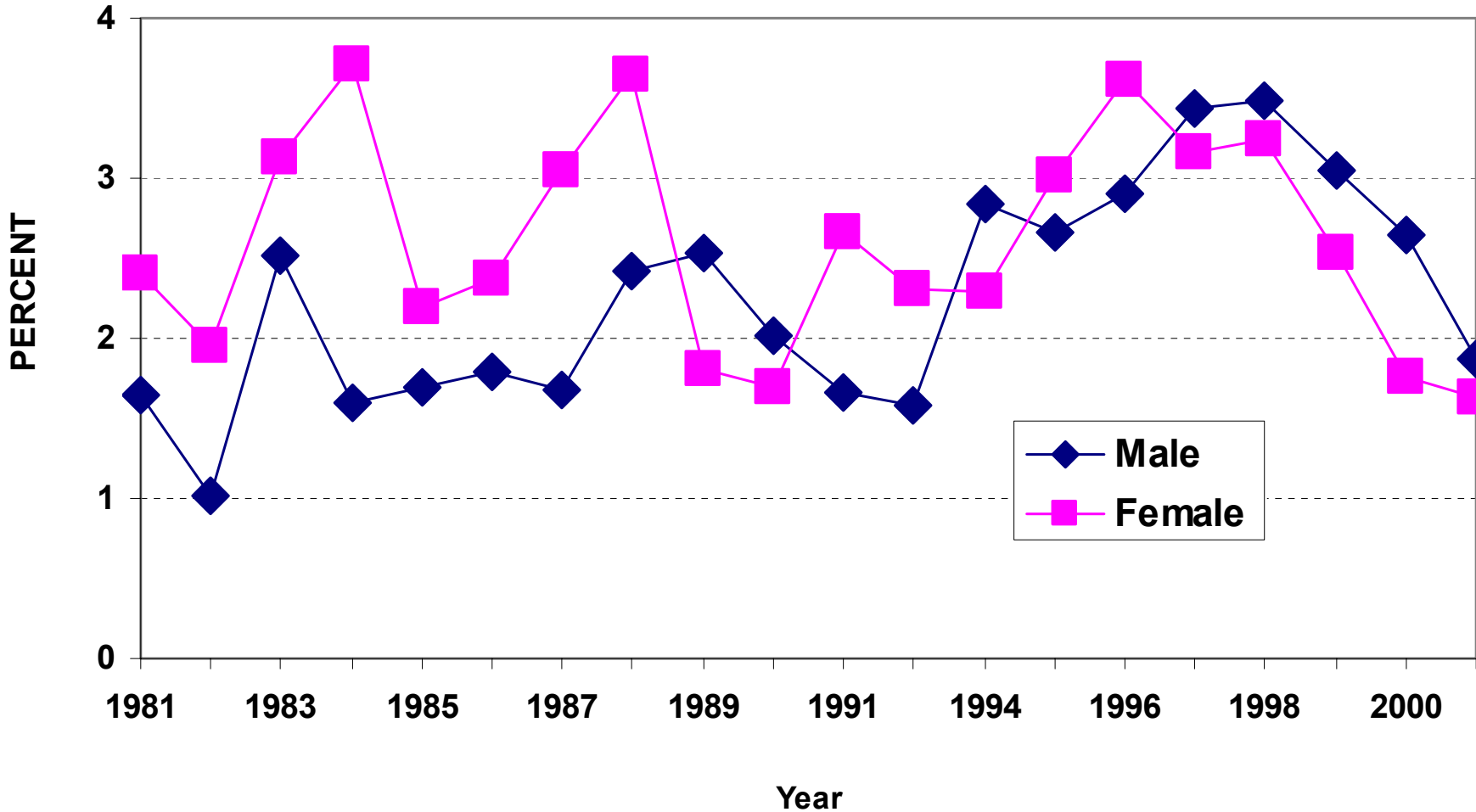
Sources: APB, CIRP Trends Data, YFCY 2002

Drank Wine or Liquor Frequently During HS Senior Year: 2001



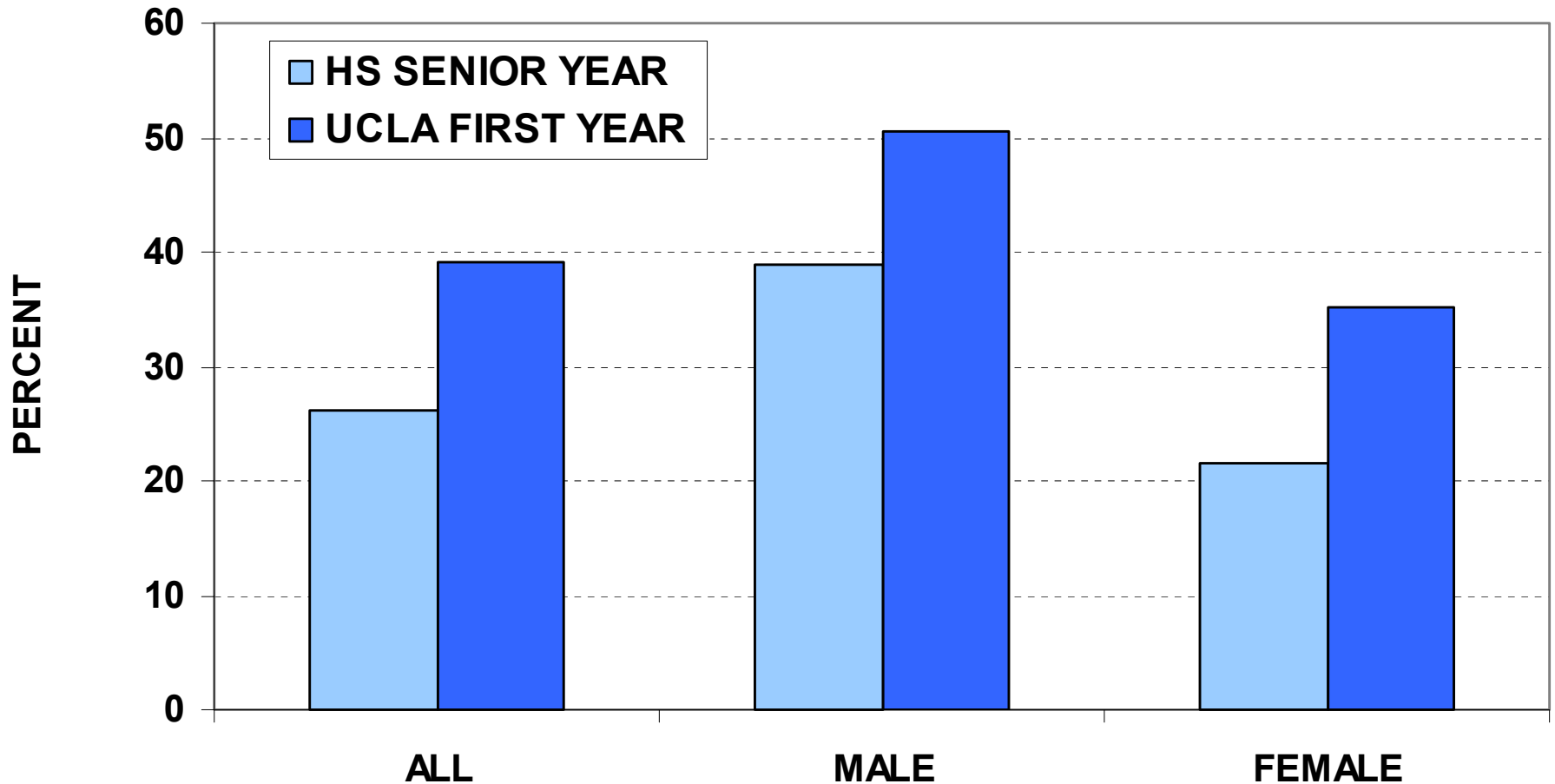
Sources: APB, CIRP Trends Data,
YFCY 2002

Smoked Cigarettes Frequently During HS Senior Year: 2001



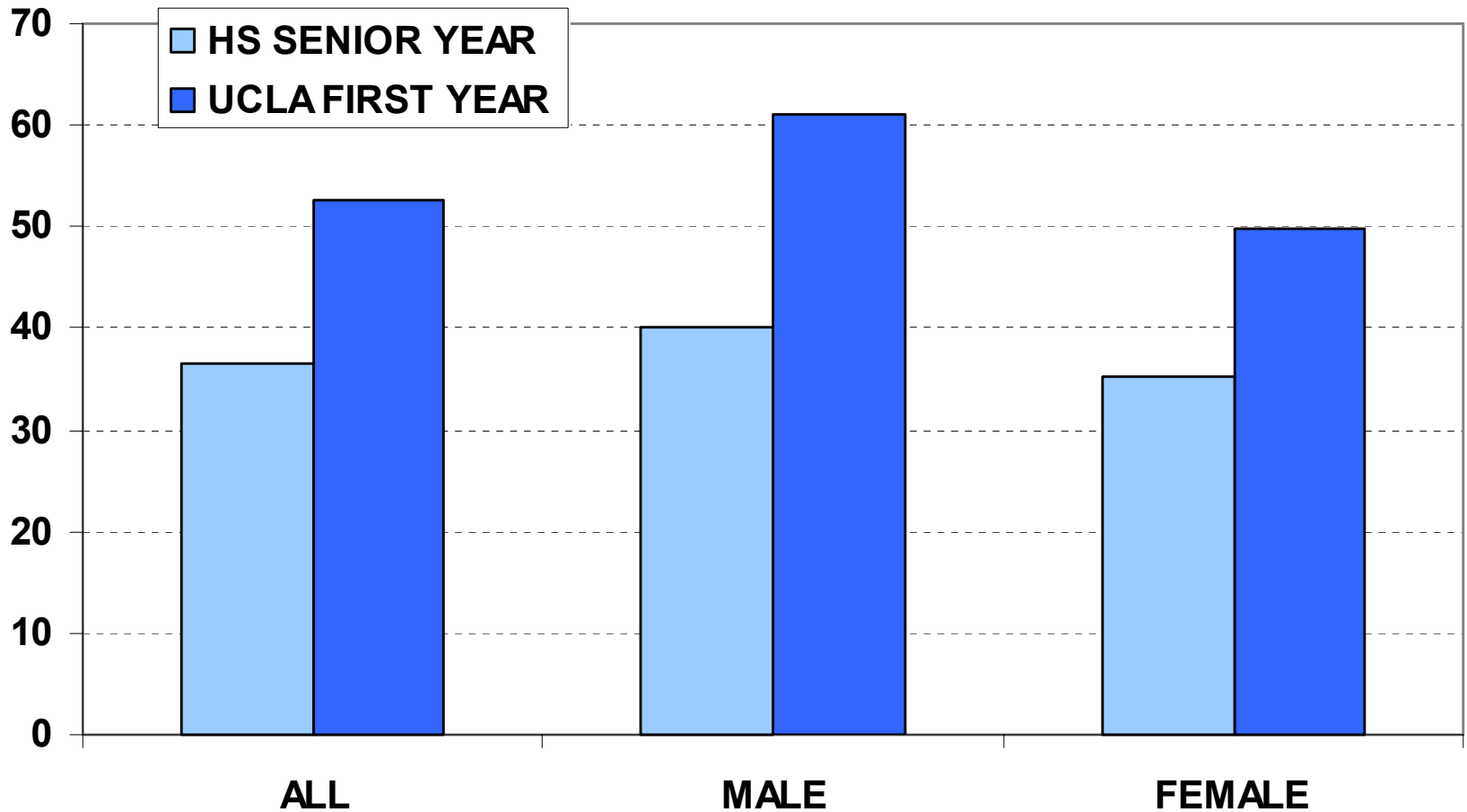
Sources: APB, CIRP Trends Data,
YFCY 2002

Drank Beer Frequently or Occasionally: HS Senior Year and UCLA First Year (N=375)



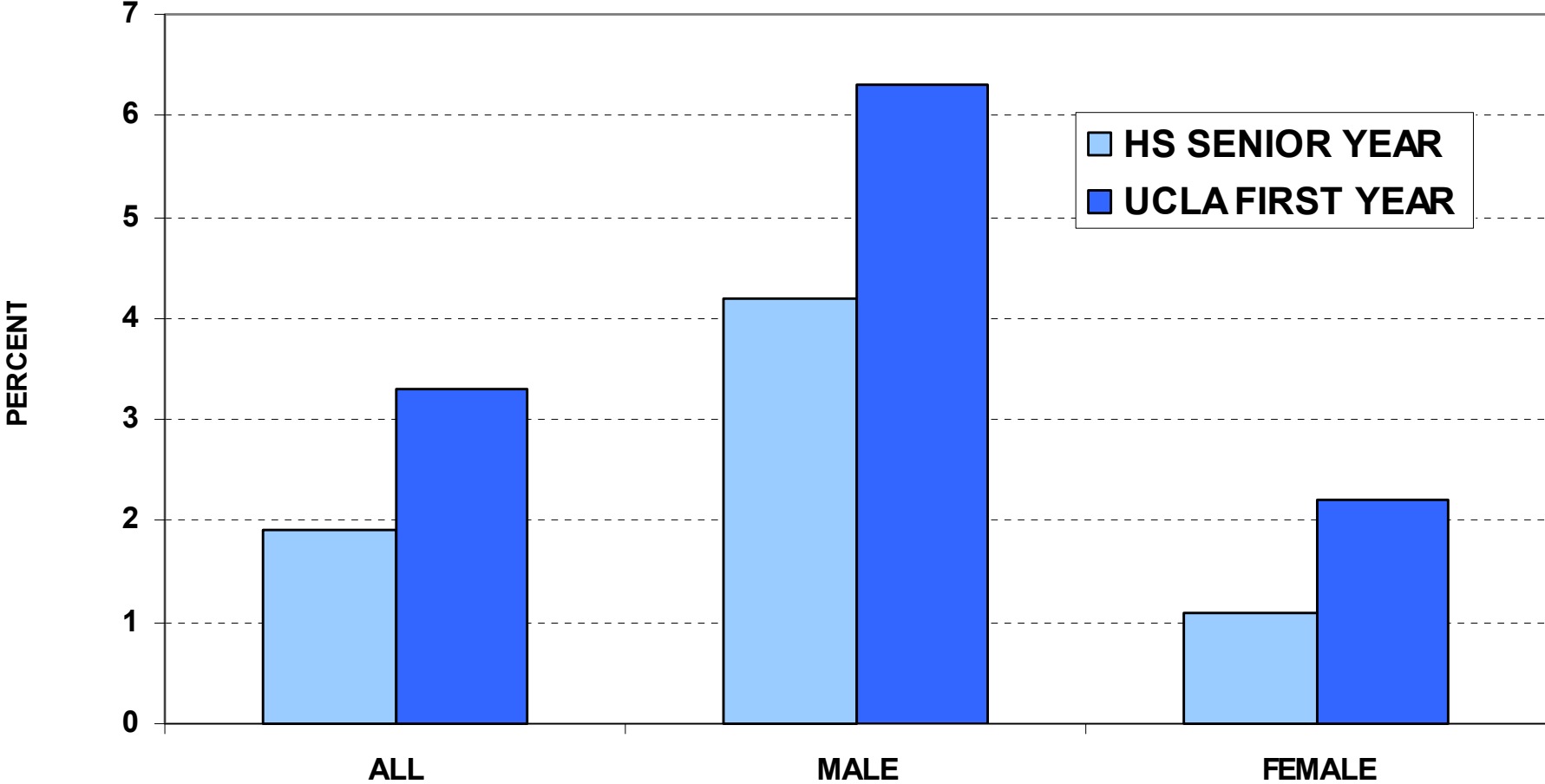
Sources: APB, CIRP Trends Data,
YFCY 2002

Drank Wine or Liquor Frequently or Occasionally: HS Senior Year and UCLA First Year (N=375)



Sources: APB, CIRP Trends Data,
YFCY 2002

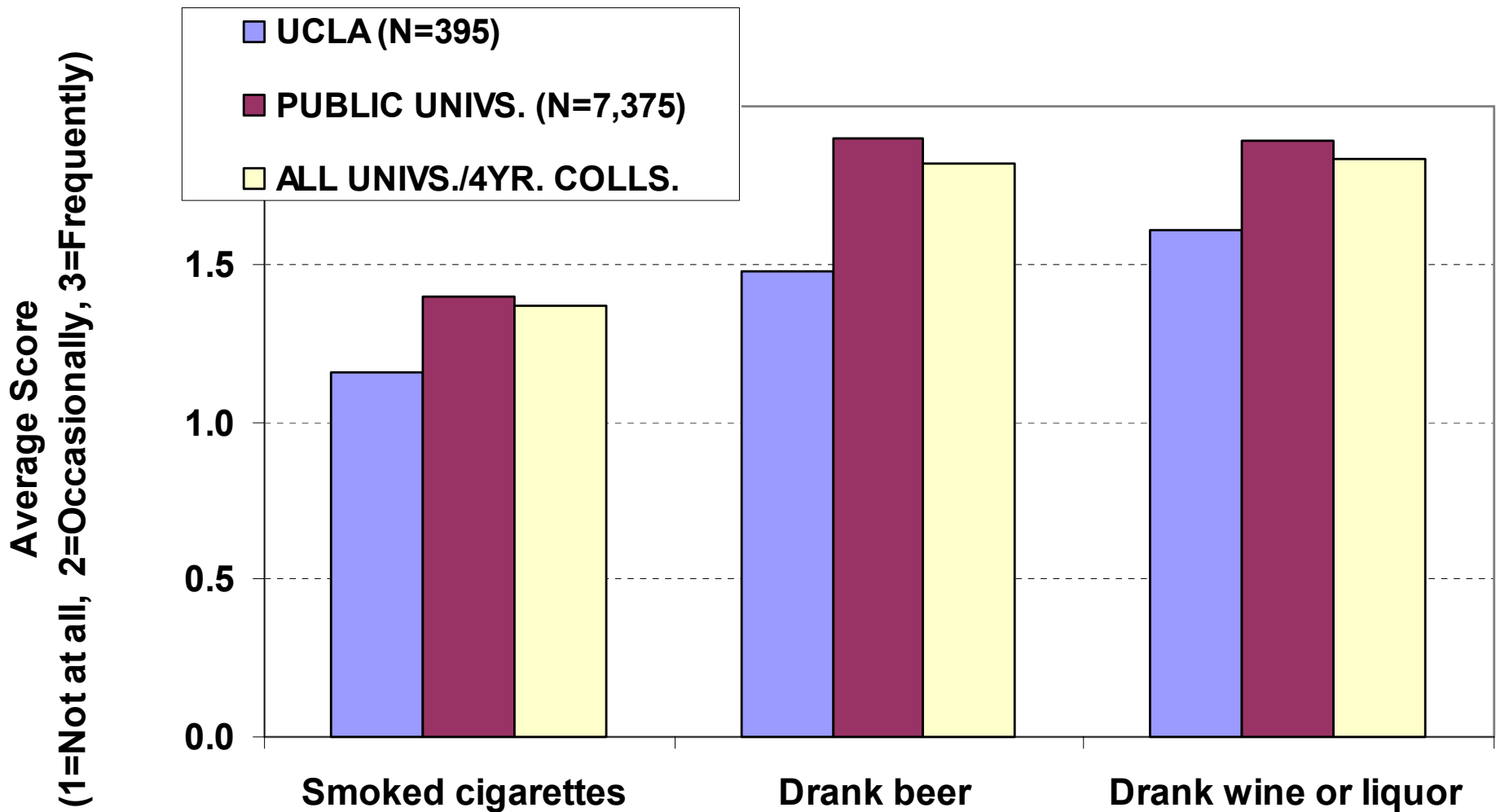
Smoked Cigarettes Frequently: HS Senior Year and UCLA First Year (N=375)



Sources: APB, CIRP Trends Data, YFCY 2002

Average Scores on "Smoked Cigarettes/Drank Beer/Drank Wine or Liquor" in First Year: UCLA-National Norms* (2002)

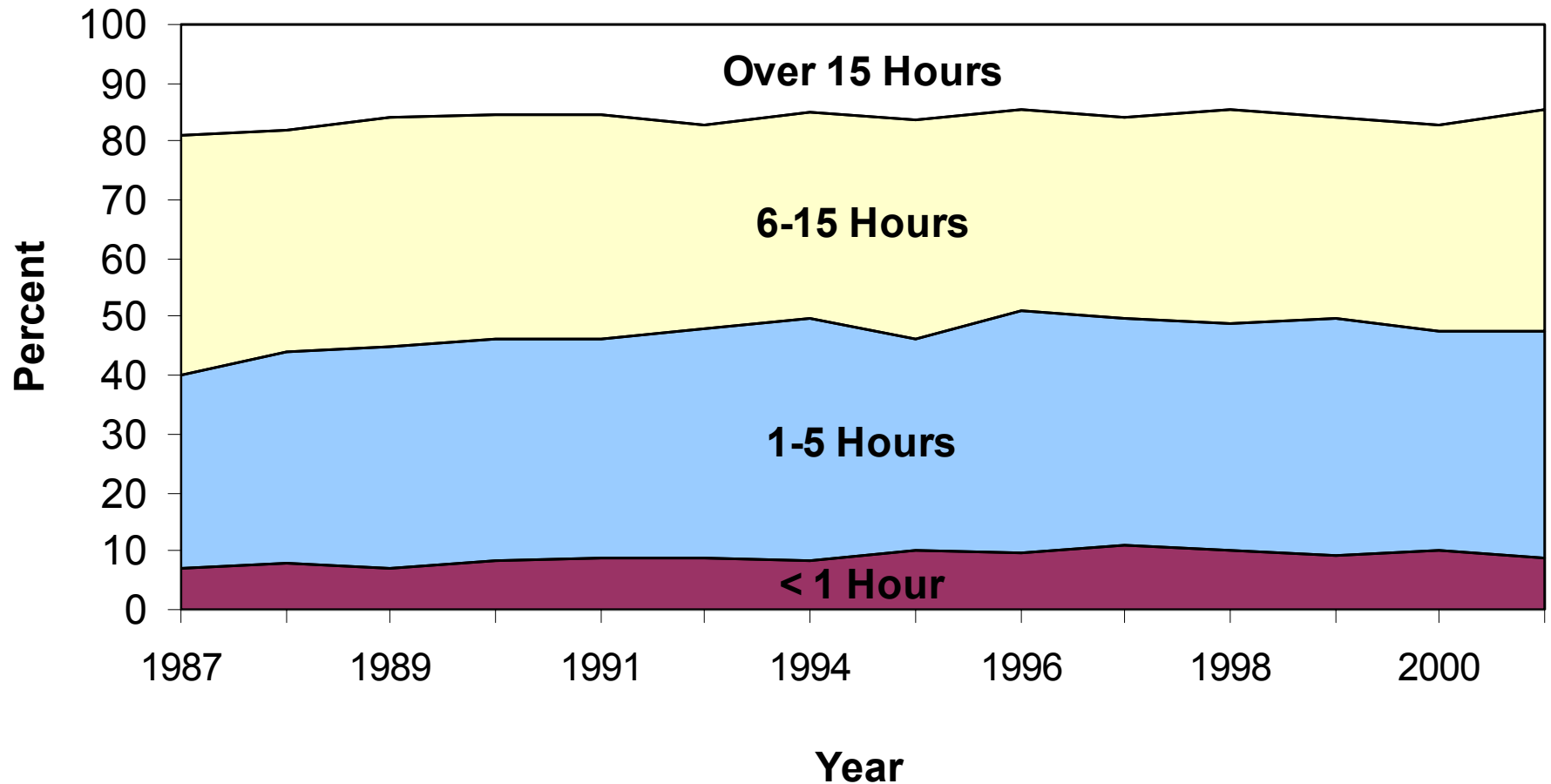
* The difference is statistically significant at 99% confidence level.



Sources: APB, CIRP Trends Data,
YFCY 2002

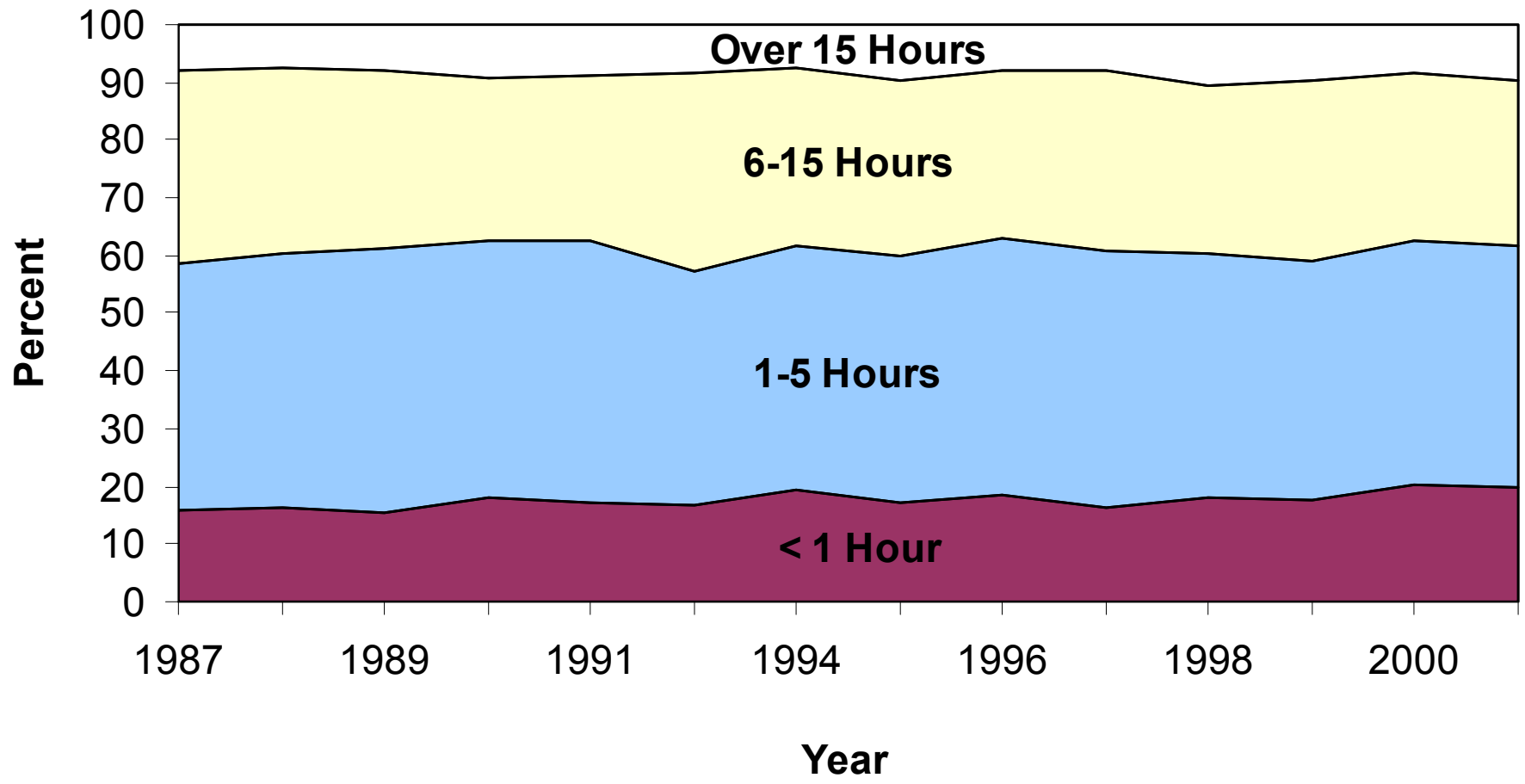
E. Exercise

Time Spent On Exercise/Sports During HS Senior Year Male (1987-2001)



Sources: APB, CIRP Trends Data,
YFCY 2002

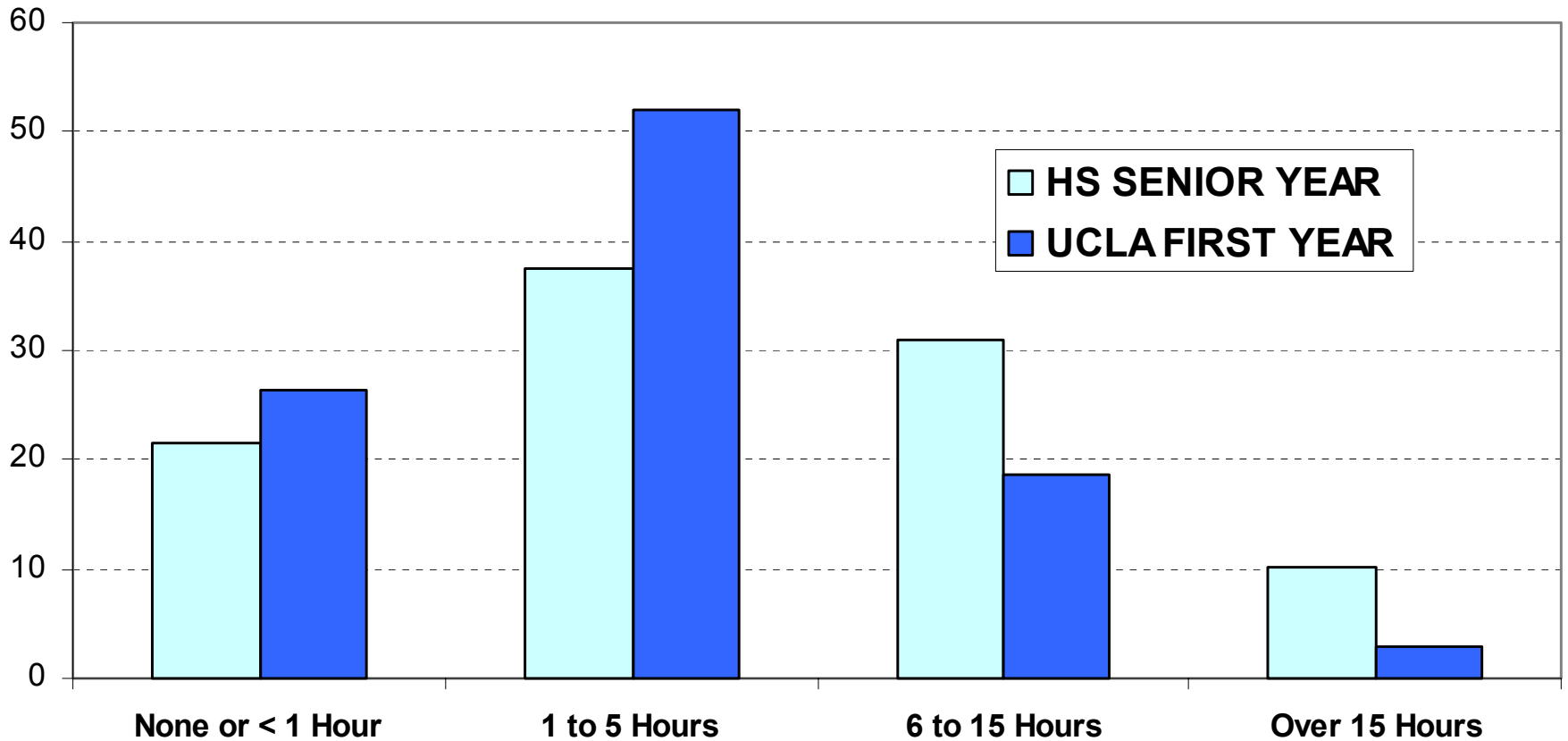
Time Spent On Exercise/Sports During HS Senior Year Female (1987-2001)



Sources: APB, CIRP Trends Data,
YFCY 2002

Time Spent on Exercising/Sports

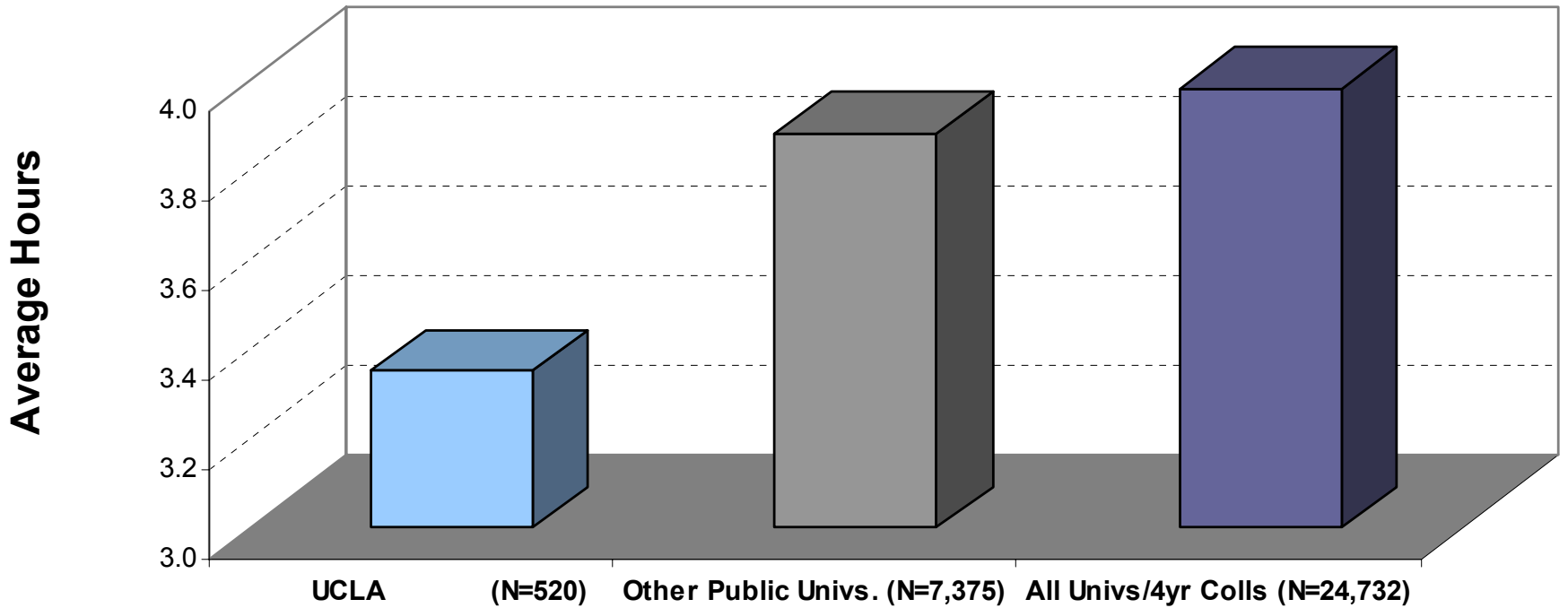
HS Senior Year and UCLA First Year (N=375)



Sources: APB, CIRP Trends Data,
YFCY 2002

Average Hours Spent on Exercise/Sports per Week in First Year: UCLA and National Norms* (2002)

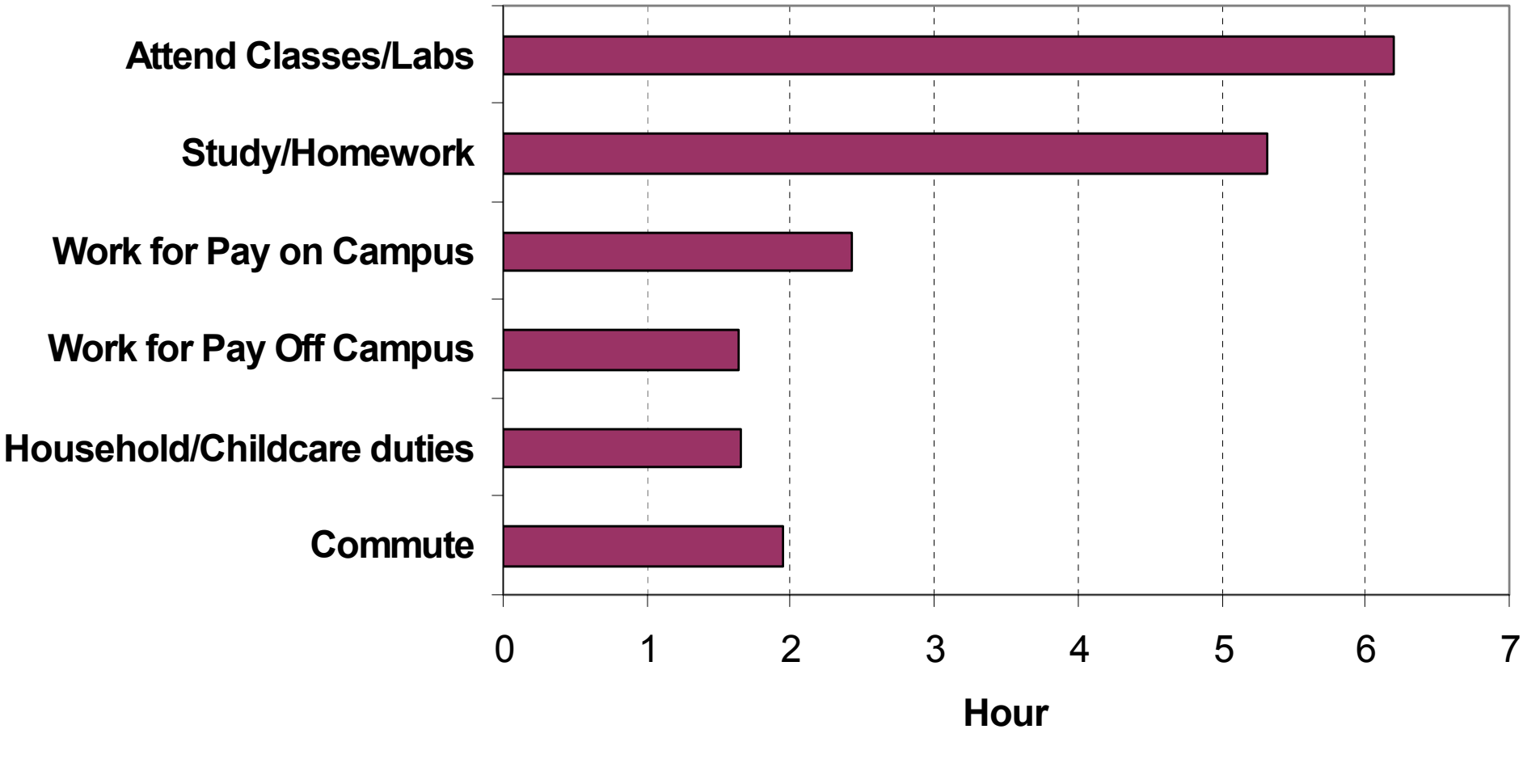
* The difference is statistically significant at 99% confidence level.



Sources: APB, CIRP Trends Data,
YFCY 2002

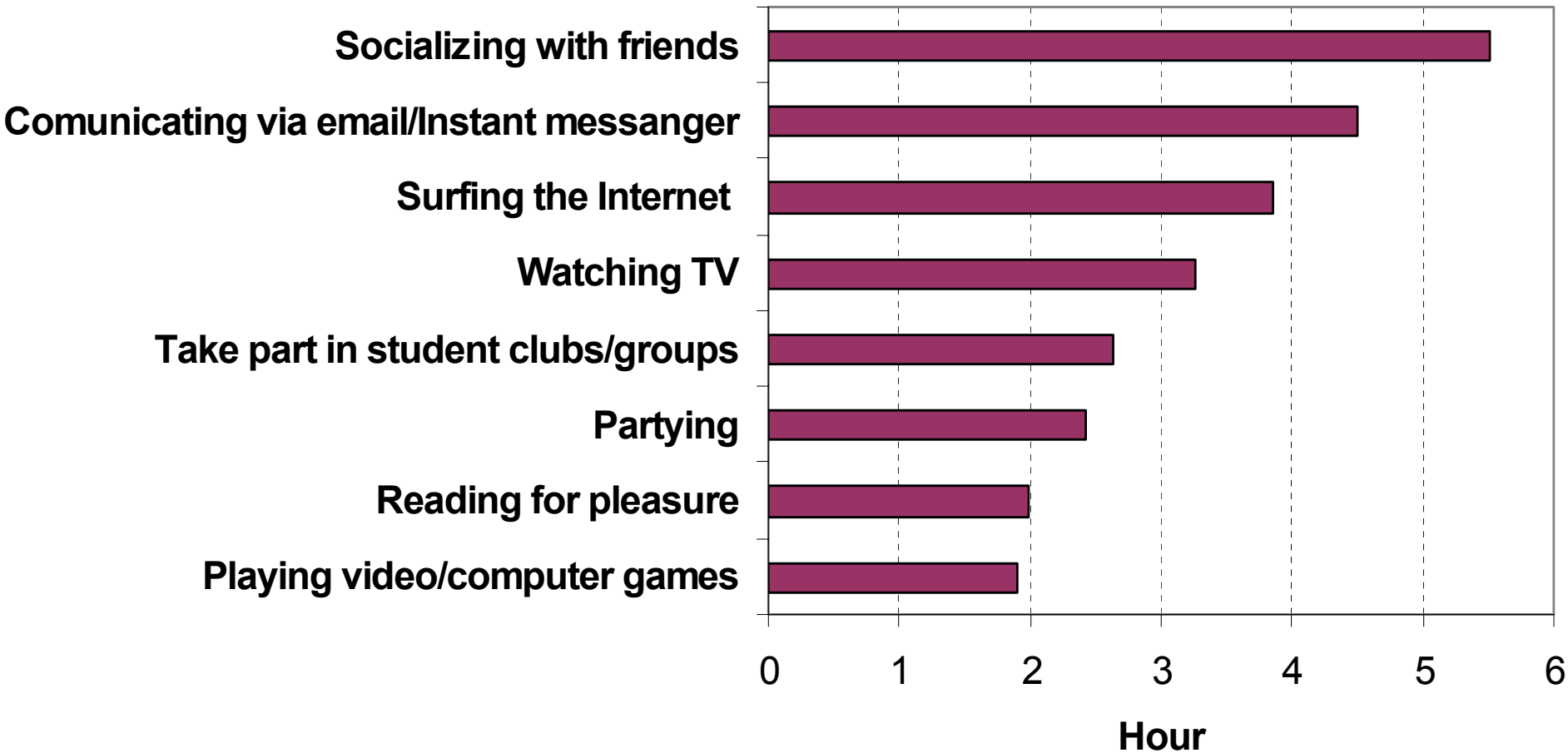
F. Time Spent on Activities in First Year

Average Hours Spent Weekly on School/work Activities During the First Year of UCLA: 2002 (N=565)



Sources: APB, CIRP Trends Data,
YFCY 2002

Average Hours Spent Weekly on Leisure Activities During the First Year of UCLA: 2002 (N=565)



Sources: APB, CIRP Trends Data,
YFCY 2002